

Prices - Aug 2019

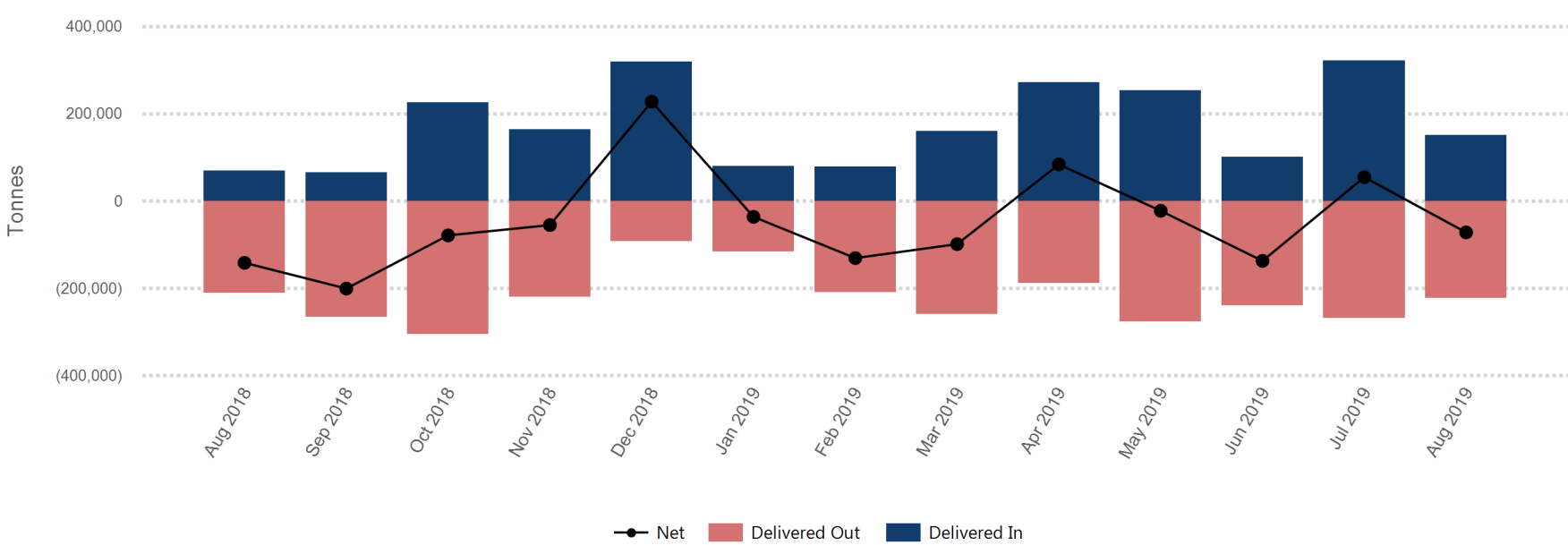
Contract	Offical Cash Settlement Price				Official 3 Month Price			
	Average	Low	High	*M/M change %	Average	Low	High	*M/M change %
LME Aluminium	\$1,740.93	\$1,712.50	\$1,762.50	-2.9%	\$1,771.12	\$1,741.50	\$1,795.00	-2.5%
LME Aluminium Alloy	\$1,215.81	\$1,140.00	\$1,320.00	-3.8%	\$1,225.71	\$1,155.00	\$1,310.00	-2.9%
LME NASAAC	\$1,051.14	\$1,000.00	\$1,185.00	-6.8%	\$1,085.48	\$1,025.00	\$1,205.00	-5.8%
LME Copper	\$5,707.98	\$5,647.00	\$5,876.00	-3.9%	\$5,733.79	\$5,674.00	\$5,903.00	-3.7%
LME Lead	\$2,043.19	\$1,939.00	\$2,103.50	3.5%	\$2,041.62	\$1,942.00	\$2,094.00	3.2%
LME Nickel	\$15,682.14	\$14,290.00	\$17,860.00	16.5%	\$15,667.38	\$14,315.00	\$17,800.00	15.9%
LME Tin	\$16,577.14	\$15,710.00	\$17,300.00	-7.9%	\$16,566.90	\$15,635.00	\$17,320.00	-7.9%
LME Zinc	\$2,275.14	\$2,226.00	\$2,396.00	-6.8%	\$2,278.50	\$2,240.00	\$2,395.50	-6.3%
LME Cobalt	\$30,004.76	\$26,000.00	\$31,500.00	6.4%	\$31,080.95	\$26,500.00	\$33,100.00	8.3%

* Percentage change in average price from previous month

Warehouse stock movements (tonnes) - Aug 2019

Contract	Delivered In	Delivered Out	Net	Closing
LME Aluminium	25,825	134,725	-108,900	919,050
LME Aluminium Alloy	740	300	440	7,180
LME NASAAC	160	8,540	-8,380	76,640
LME Copper	98,575	50,525	48,050	335,850
LME Lead	8,675	9,650	-975	77,525
LME Nickel	13,104	4,170	8,934	152,604
LME Tin	3,435	1,265	2,170	6,995
LME Zinc	700	13,075	-12,375	66,975
LME Cobalt	0	4	-4	836
TOTAL	151,214	222,254	-71,040	1,643,655

Monthly warehouse stock movements

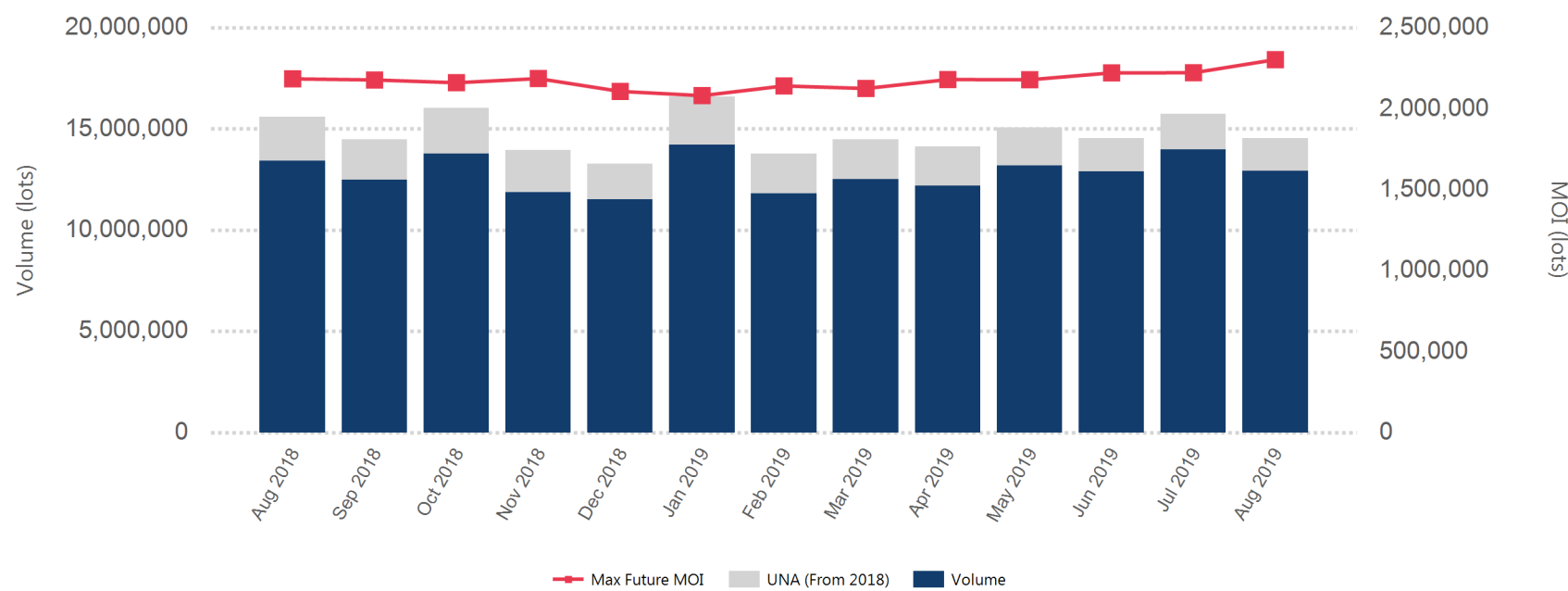


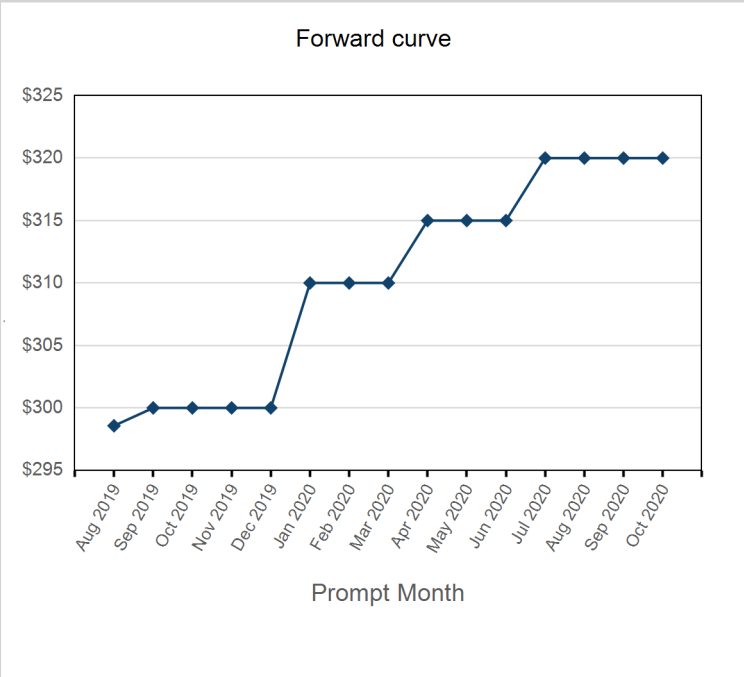
Volumes - Aug 2019

Contract	ADV (lots)	ADV Y/Y change % *	Volume Year to date (lots)	Tonnes Year to date (millions)	Futures Market Open Interest **
Non-ferrous metals (futures,traded options and TAPOs)					
LME Aluminium	257,665	0.4%	45,683,305	1,142	980,867
LME Aluminium Alloy	240	43.7%	44,068	1	1,032
LME NASAAC	1,232	38.6%	146,768	3	2,548
LME Copper	152,147	3.8%	25,427,615	636	382,832
LME Lead	45,665	-17.0%	8,214,646	205	138,113
LME Nickel	120,053	17.4%	16,517,101	99	355,871
LME Tin	5,007	-0.2%	892,814	4	21,683
LME Zinc	107,914	-21.1%	21,389,108	535	312,233
LME M A Futures***	147	18.5%	42,497	1	8,851
LMEminis	0	-	0	0	0
LME Premiums	0	-	0	0	0
LME Aluminium Premium Duty Paid US Midwest (Platts)	6	-	661	0	329
Minor metals (futures)					
LME Cobalt	34	-10.5%	8,201	0	238
Ferrous (futures)					
LME Steel Scrap	1,303	-54.4%	200,774	2	5,807
LME Steel HRC FOB China (Argus)	76	-	8,356	0	345
LME Steel HRC N. America (Platts)	92	-	8,896	0	288
LME Steel Rebar	120	-1.6%	36,392	0	2,326
Precious (futures)					
LME Silver	239	-51.1%	56,302	0	2,084
LME Gold	845	-60.4%	255,004	0	13,807
Total	692,783	-2.3%	118,932,508	2,629	2,229,254
Total (excl. UNA)	615,896				

* Percentage year-on-year change between current month and corresponding month in the previous year.
 **Last trading day of month
 ***LME Monthly Average Futures include contracts for aluminium, aluminium alloy, NASAAC, copper, nickel, lead, tin and zinc

Monthly Volumes & Futures Market Open Interest (MOI)



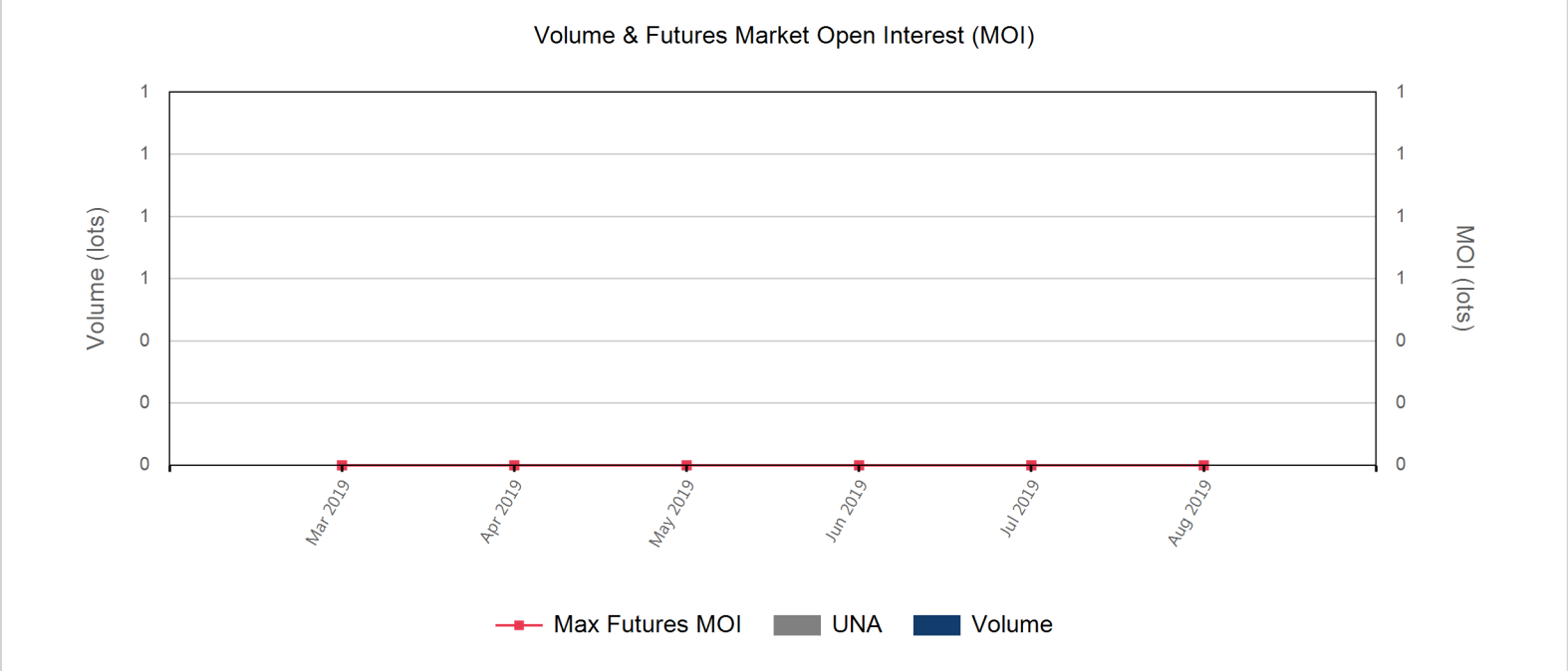


Front Month	
Average	\$301.79
Minimum	\$298.57
Maximum	\$310.00

Volume (Excl UNA) - Aug 2019	
Lots	0

Volume - Aug 2019	
Lots	0
Tonnes	0

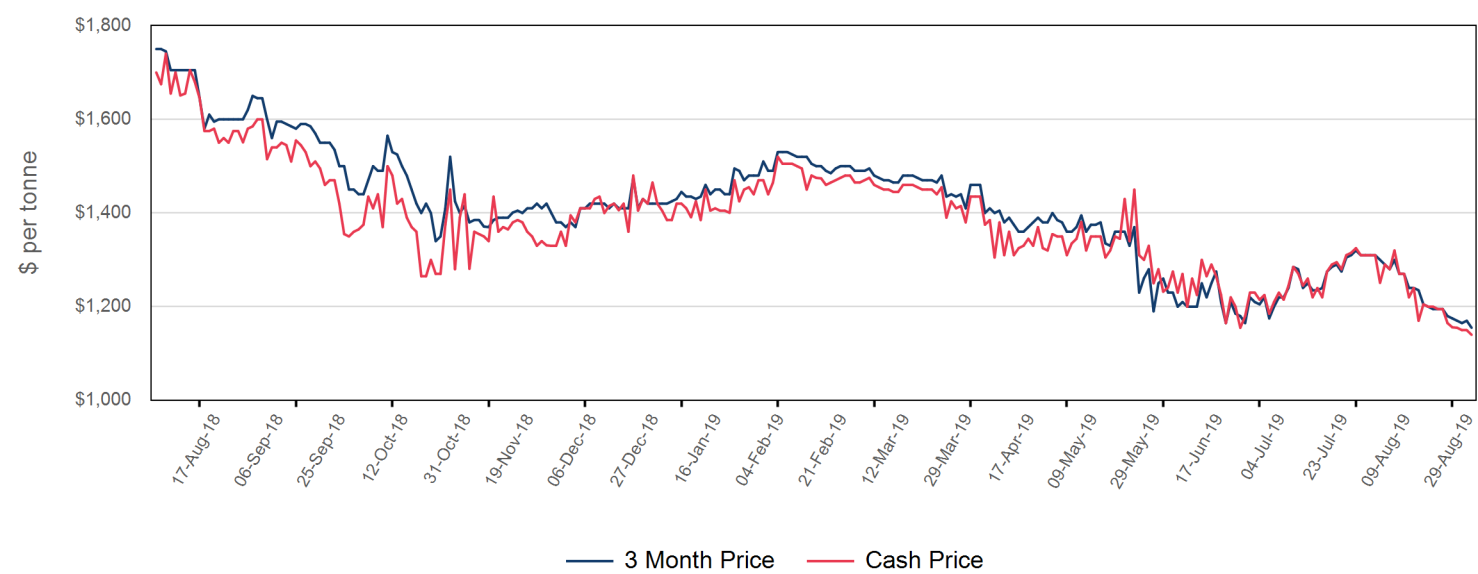
Volume - Year To date	
Lots	0
Tonnes	0



Prompt Month	End of Month - Daily Settlement	Volume	Endof Month MOI
Aug 2019	\$298.57		
Sep 2019	\$300.00		
Oct 2019	\$300.00		
Nov 2019	\$300.00		
Dec 2019	\$300.00		
Jan 2020	\$310.00		
Feb 2020	\$310.00		
Mar 2020	\$310.00		
Apr 2020	\$315.00		
May 2020	\$315.00		
Jun 2020	\$315.00		
Jul 2020	\$320.00		
Aug 2020	\$320.00		
Sep 2020	\$320.00		
Oct 2020	\$320.00		



Official Price by prompt date



Official Cash Settlement Price	
Average	\$1,215.81
Minimum	\$1,140.00
Maximum	\$1,320.00

Official 3 Month Price	
Average	\$1,225.71
Minimum	\$1,155.00
Maximum	\$1,310.00

Volume (Excl UNA) - Aug 2019	
Lots	5,030

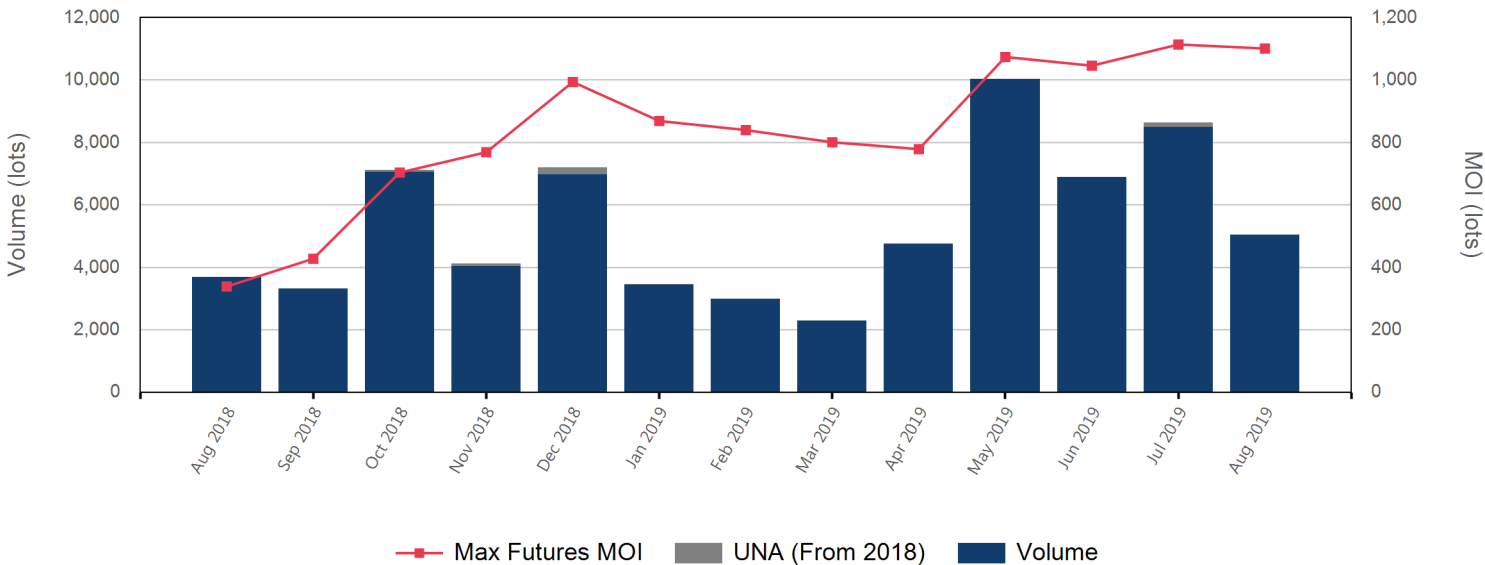
Volume - Aug 2019	
Lots	5,030
Tonnes	100,600

Volume - Year To date	
Lots	44,068
Tonnes	881,360

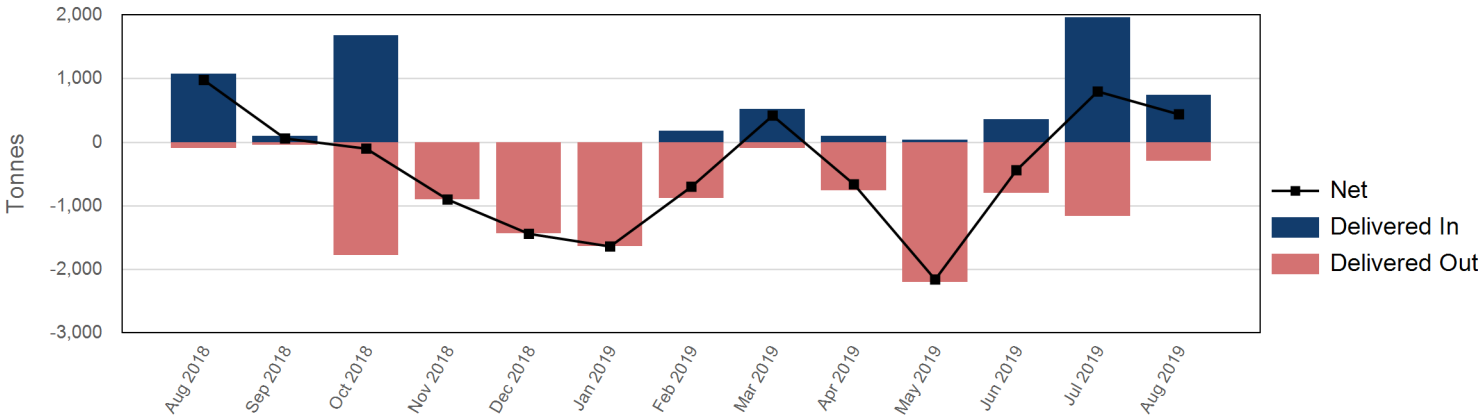
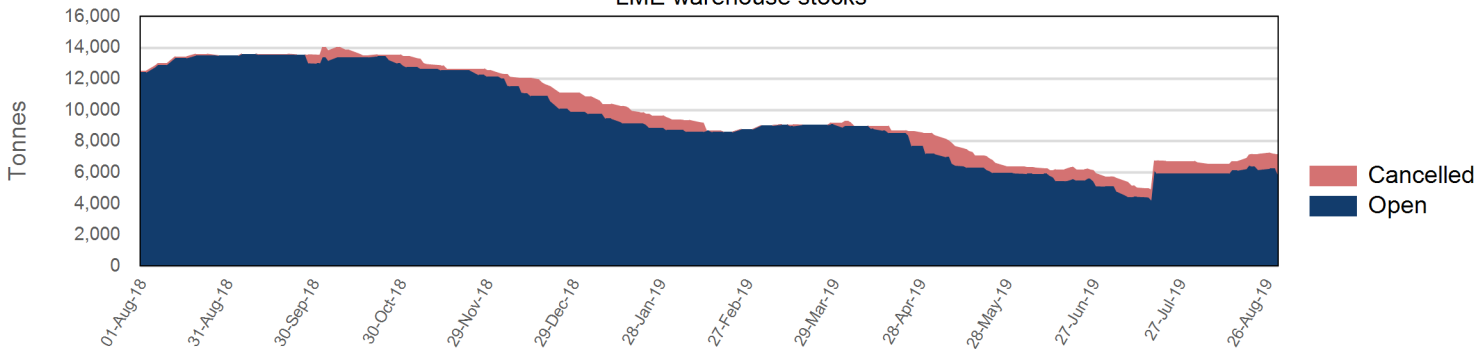
Warehouse stock - Aug 2019	
Delivered In	740
Delivered Out	-300
Net	440

Warehouse stock - Year to date	
Delivered In	3,900
Delivered Out	-7,840
Net	-3,940

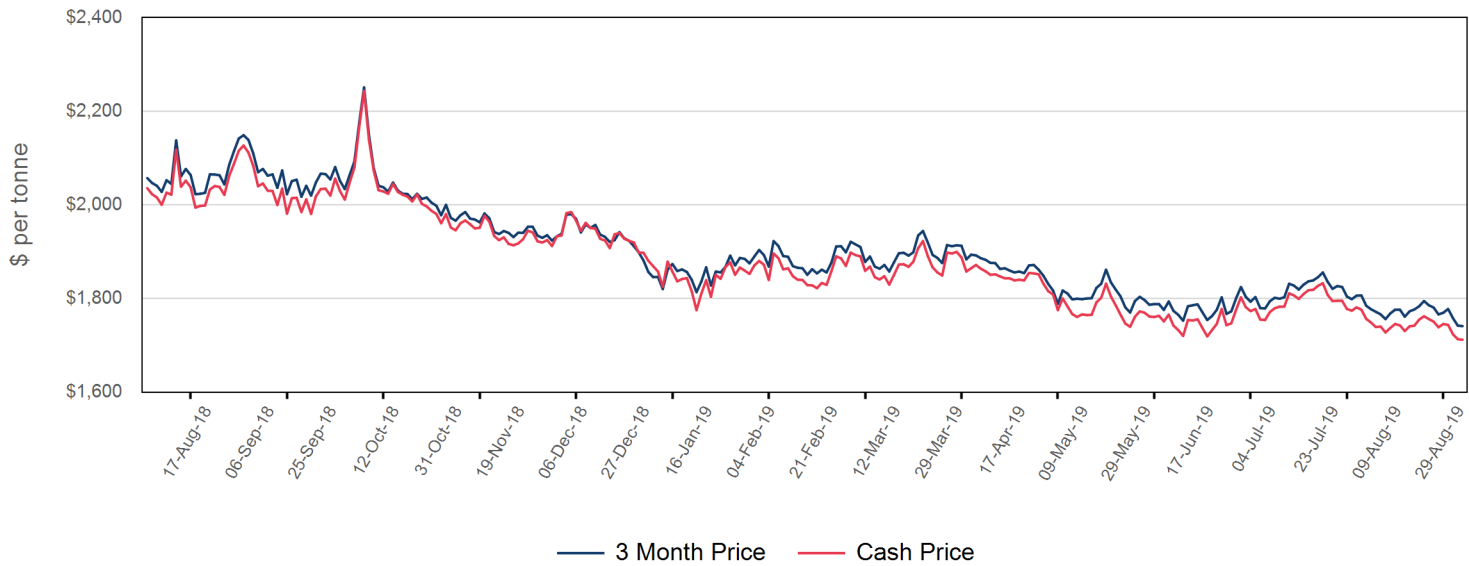
Volume & Futures Market Open Interest (MOI)



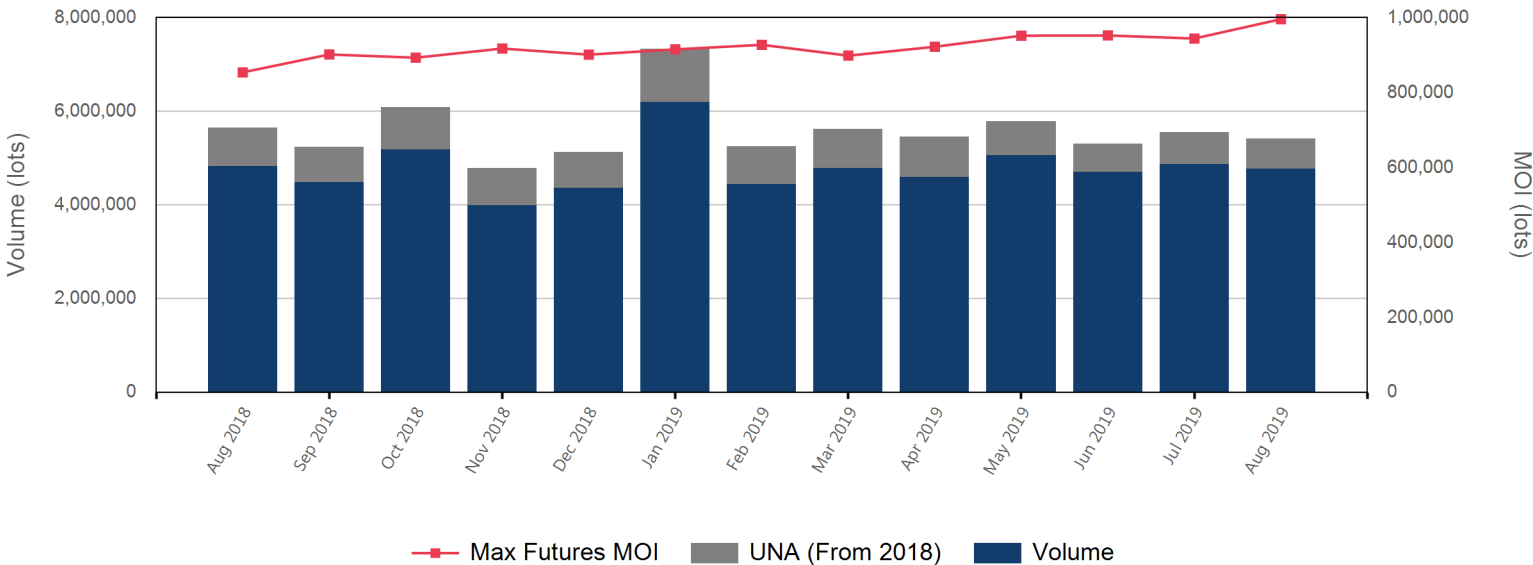
LME warehouse stocks



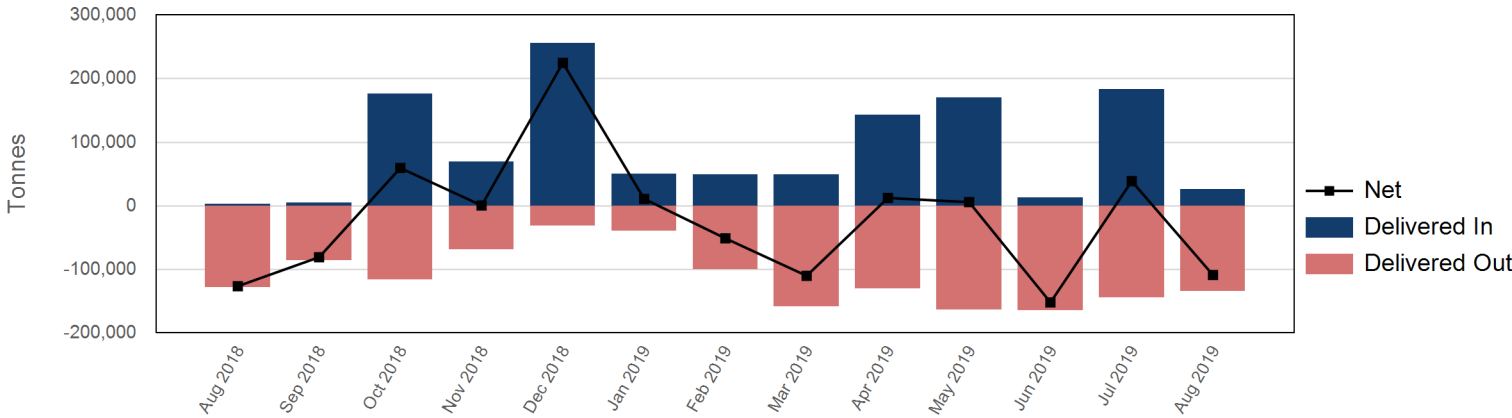
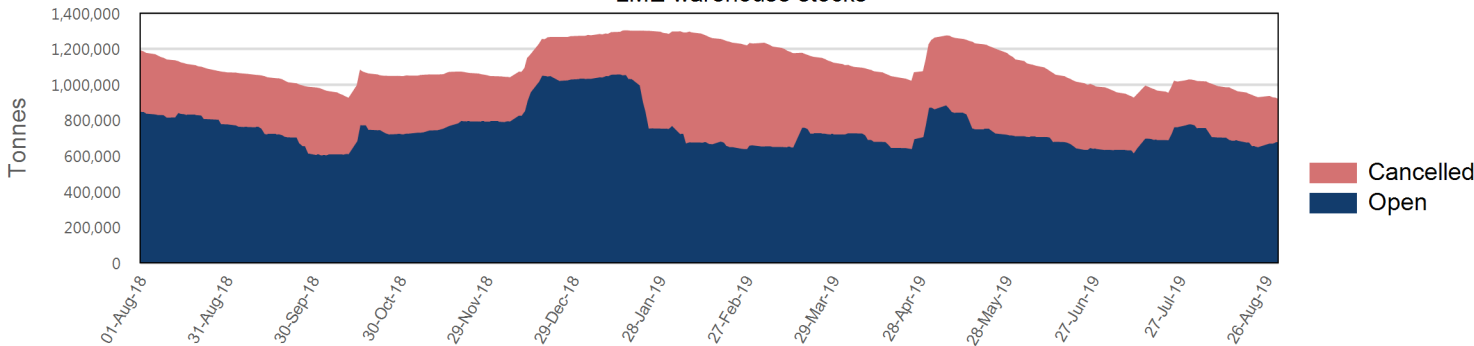
Official Price by prompt date



Volume & Futures Market Open Interest (MOI)



LME warehouse stocks



Official Cash Settlement Price

Average	\$1,740.93
Minimum	\$1,712.50
Maximum	\$1,762.50

Official 3 Month Price

Average	\$1,771.12
Minimum	\$1,741.50
Maximum	\$1,795.00

Volume (Excl UNA) - Aug 2019

Lots	4,775,460
------	-----------

Volume - Aug 2019

Lots	5,410,956
Tonnes	135,273,900

Volume - Year To date

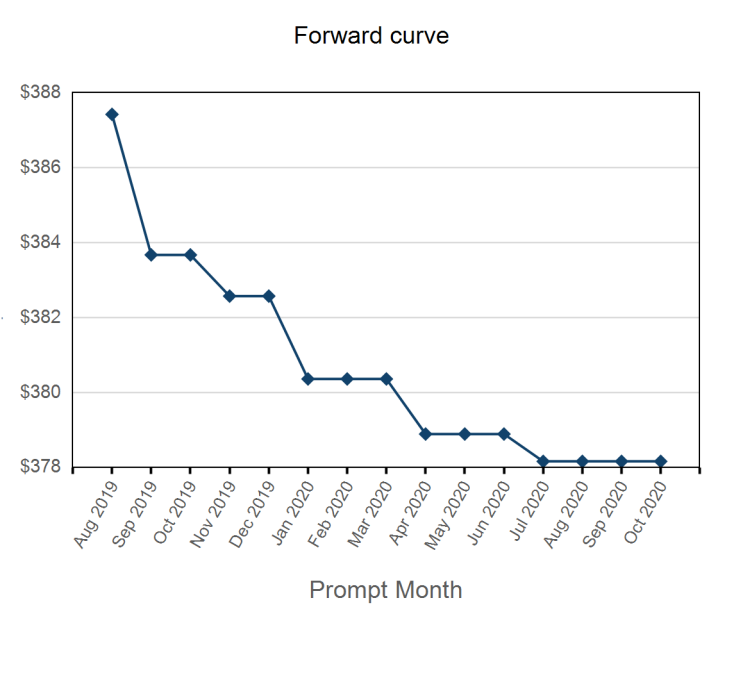
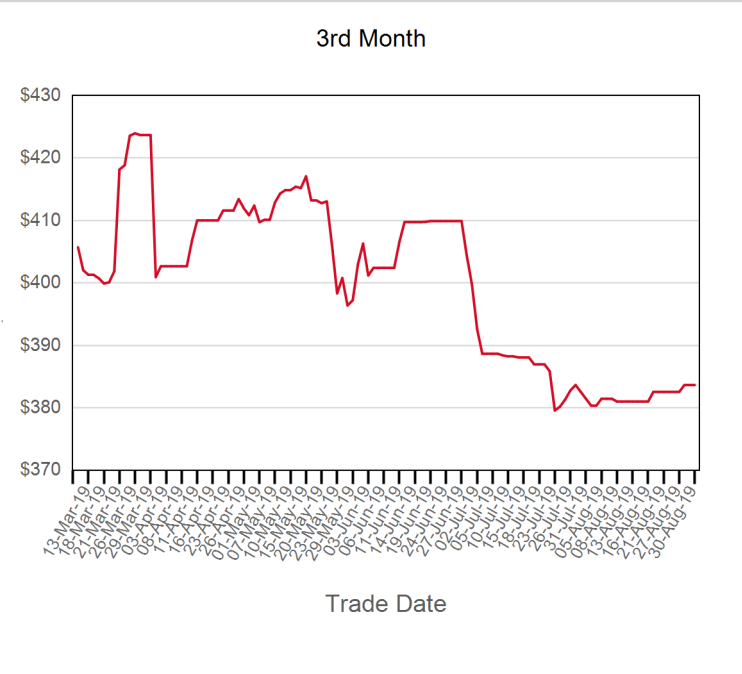
Lots	45,683,305
Tonnes	1,142,082,625

Warehouse stock - Aug 2019

Delivered In	25,825
Delivered Out	-134,725
Net	-108,900

Warehouse stock - Year to date

Delivered In	682,050
Delivered Out	-1,036,125
Net	-354,075

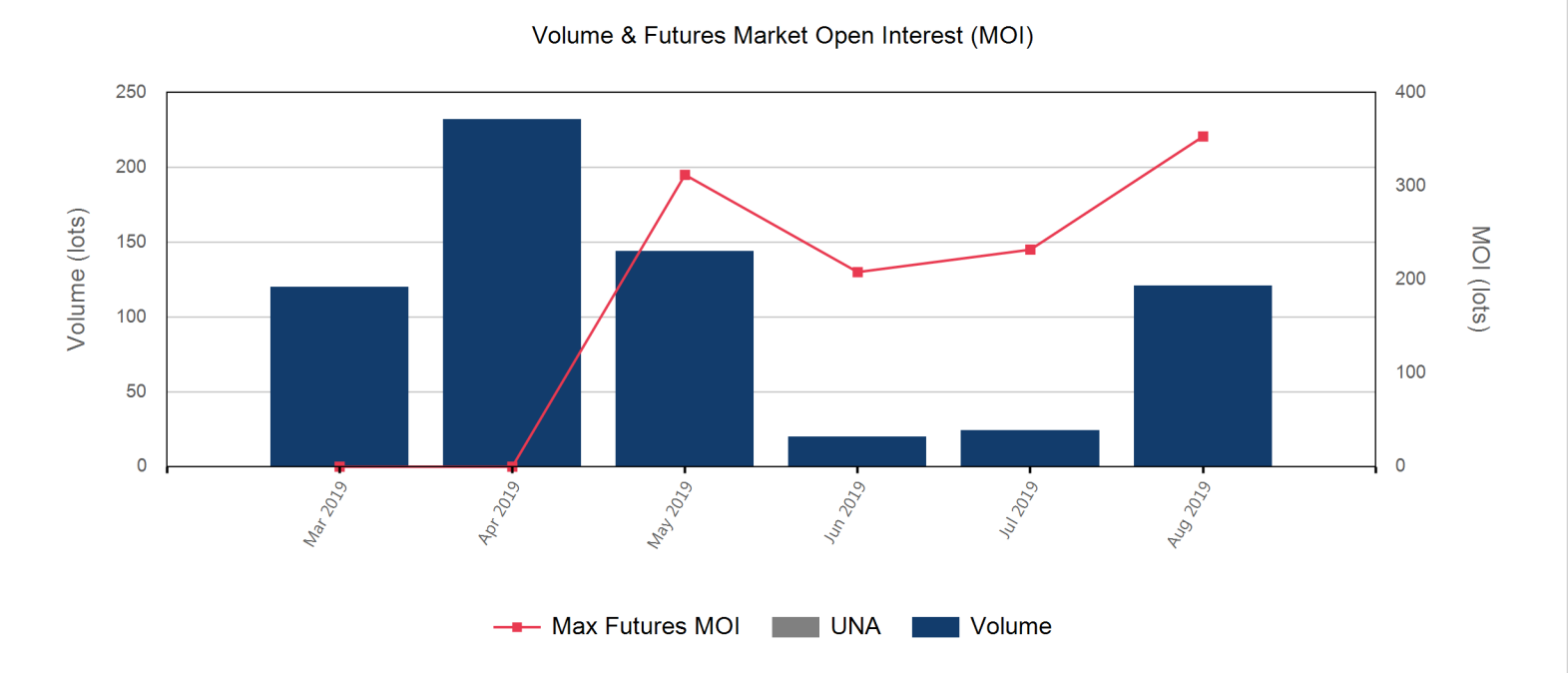


Front Month	
Average	\$386.51
Minimum	\$382.02
Maximum	\$387.42

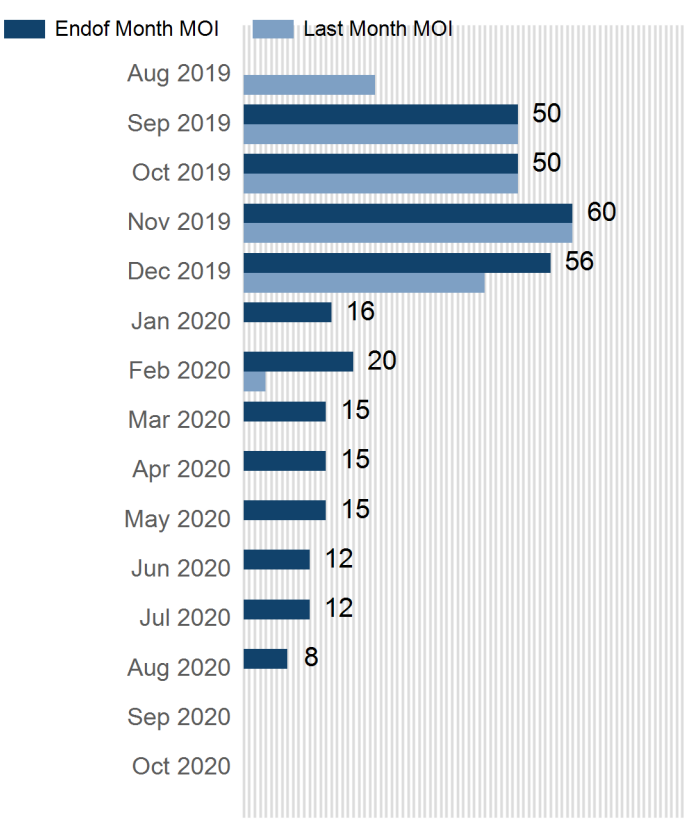
Volume (Excl UNA) - Aug 2019	
Lots	121

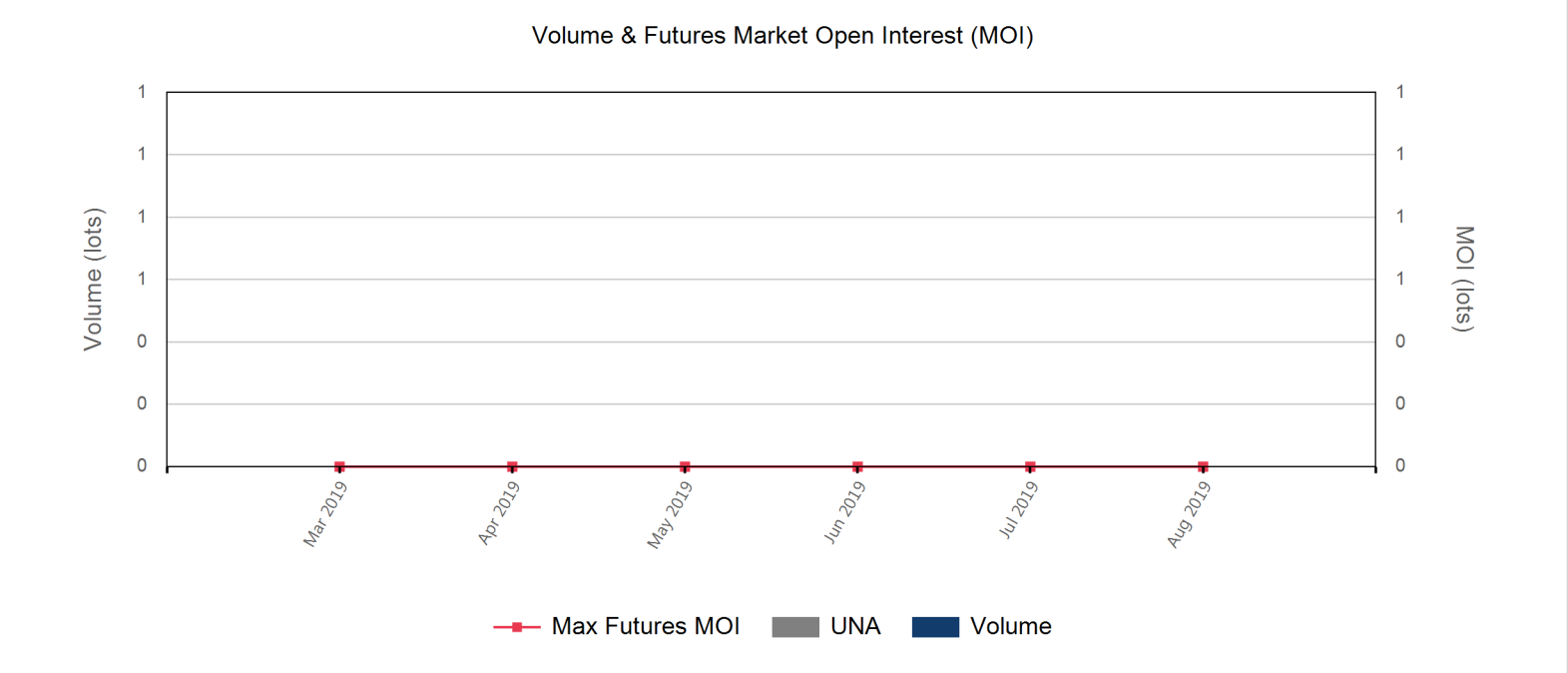
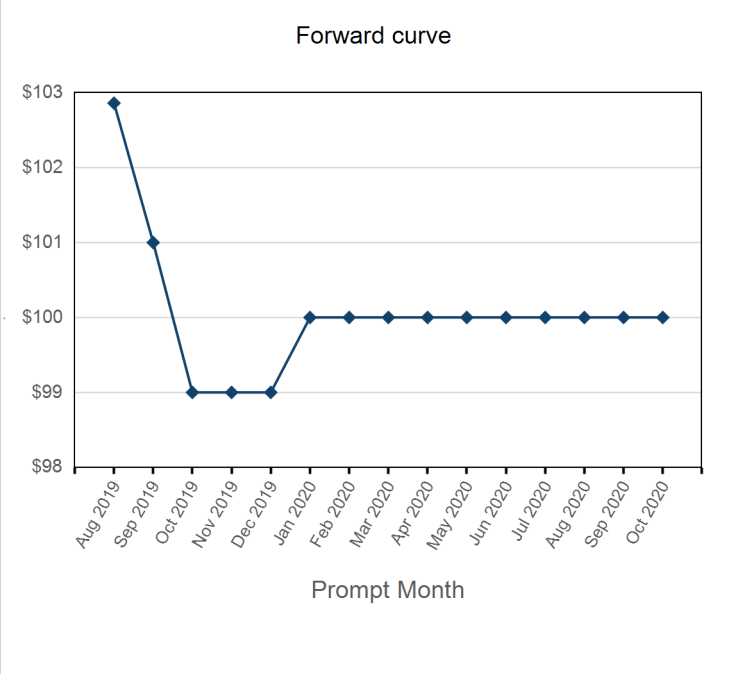
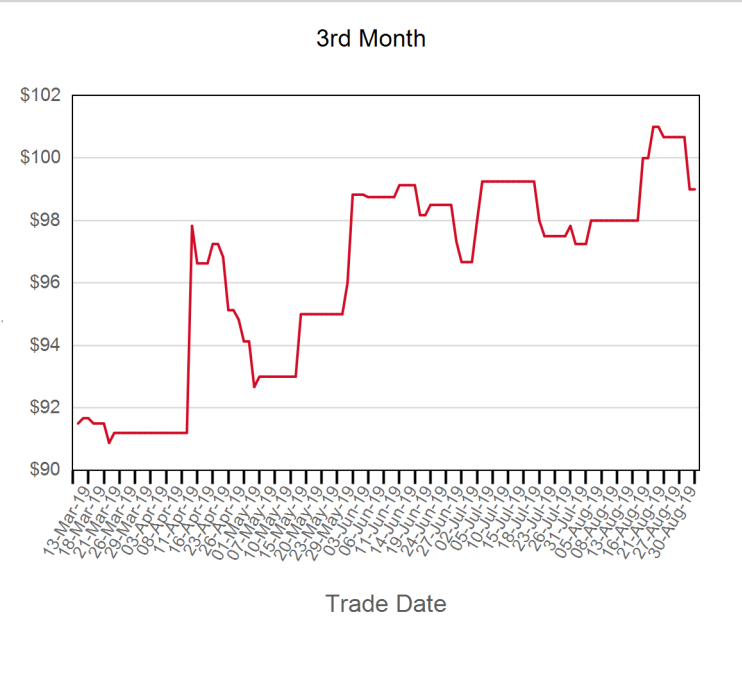
Volume - Aug 2019	
Lots	121
Tonnes	3,025

Volume - Year To date	
Lots	661
Tonnes	16,525

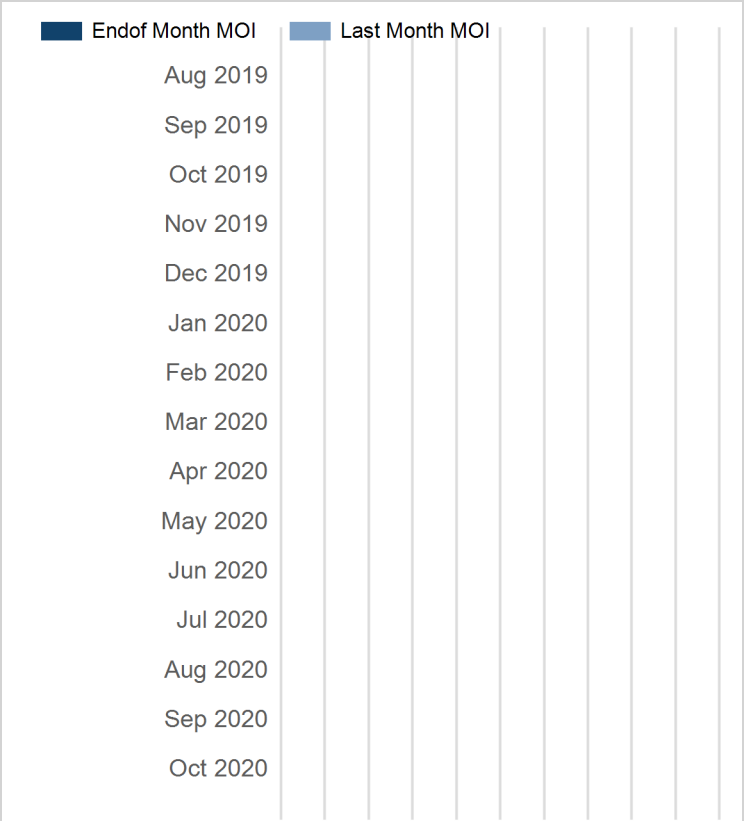


Prompt Month	End of Month - Daily Settlement	Volume	Endof Month MOI
Aug 2019	\$387.42		
Sep 2019	\$383.67		50
Oct 2019	\$383.67		50
Nov 2019	\$382.57		60
Dec 2019	\$382.57	12	56
Jan 2020	\$380.36	16	16
Feb 2020	\$380.36	16	20
Mar 2020	\$380.36	15	15
Apr 2020	\$378.89	15	15
May 2020	\$378.89	15	15
Jun 2020	\$378.89	12	12
Jul 2020	\$378.16	12	12
Aug 2020	\$378.16	8	8
Sep 2020	\$378.16		
Oct 2020	\$378.16		





Prompt Month	End of Month - Daily Settlement	Volume	Endof Month MOI
Aug 2019	\$102.86		
Sep 2019	\$101.00		
Oct 2019	\$99.00		
Nov 2019	\$99.00		
Dec 2019	\$99.00		
Jan 2020	\$100.00		
Feb 2020	\$100.00		
Mar 2020	\$100.00		
Apr 2020	\$100.00		
May 2020	\$100.00		
Jun 2020	\$100.00		
Jul 2020	\$100.00		
Aug 2020	\$100.00		
Sep 2020	\$100.00		
Oct 2020	\$100.00		

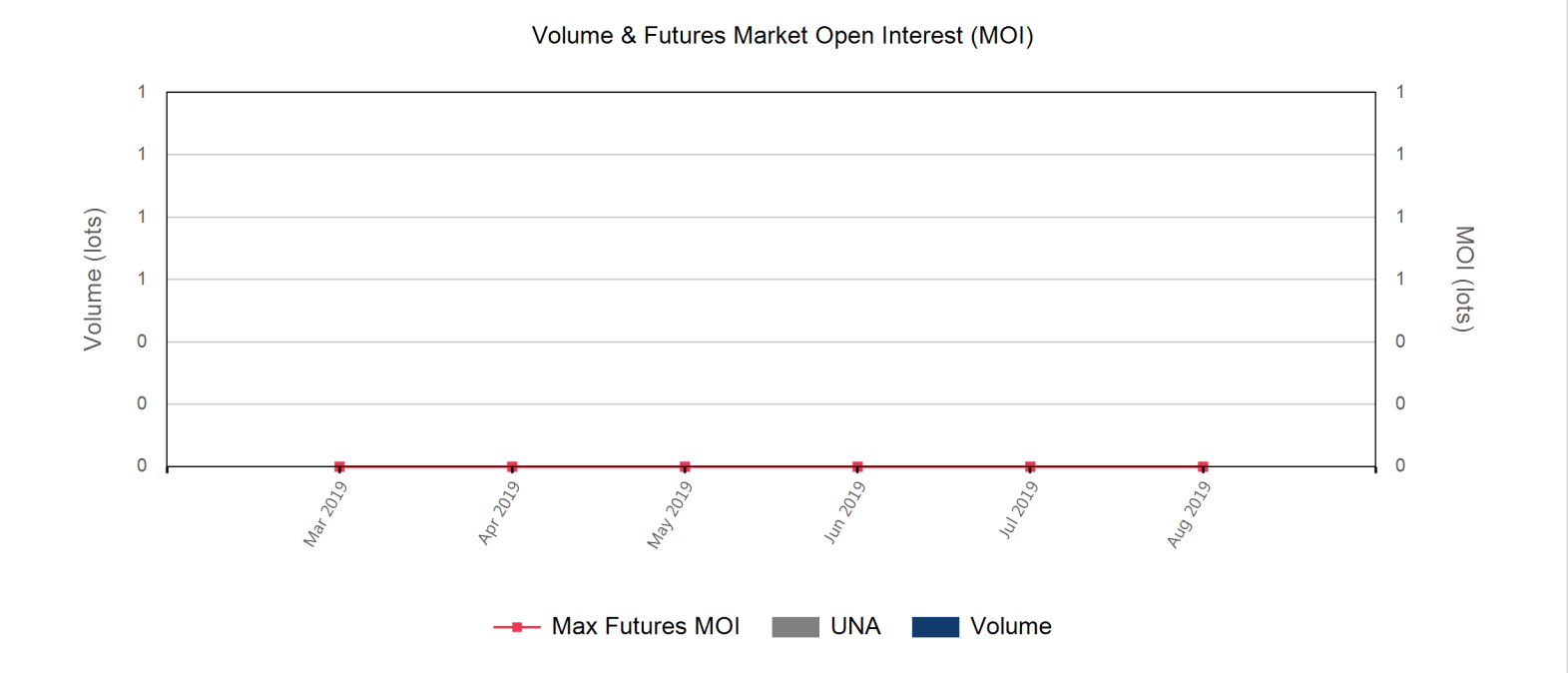
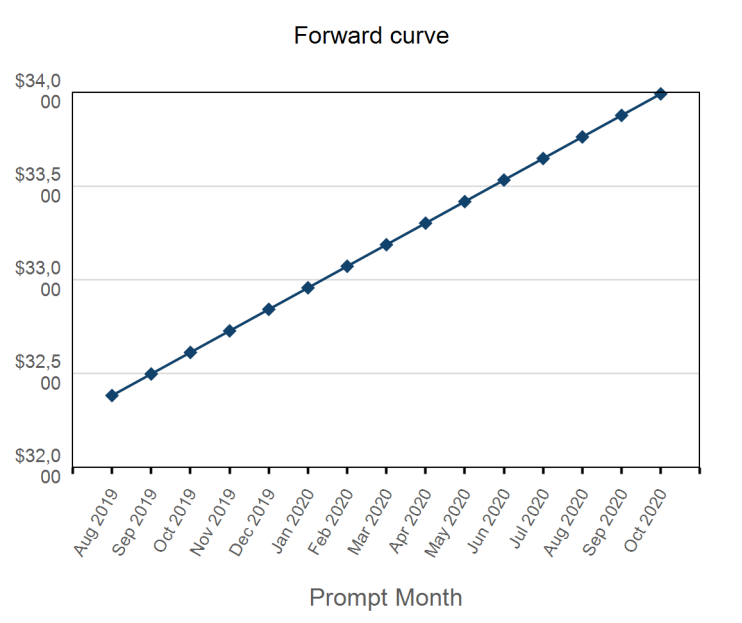
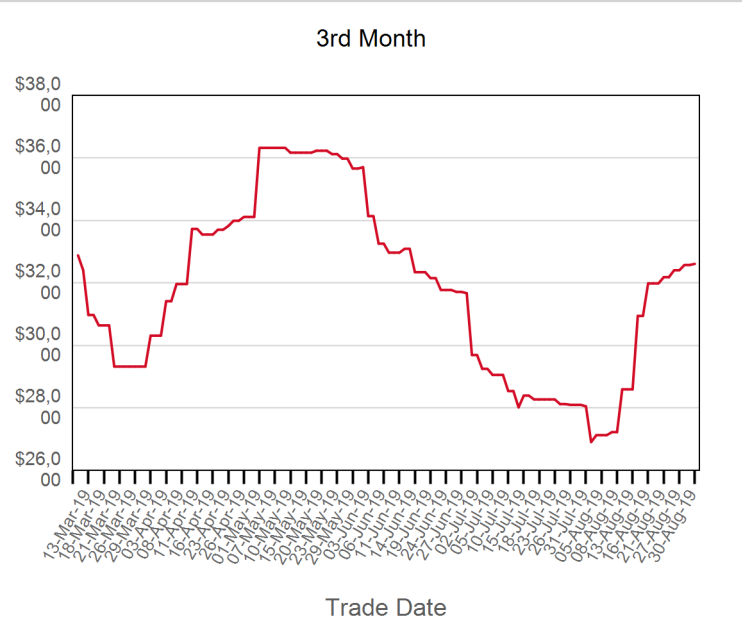


Front Month	
Average	\$100.42
Minimum	\$98.00
Maximum	\$103.00

Volume (Excl UNA) - Aug 2019	
Lots	0

Volume - Aug 2019	
Lots	0
Tonnes	0

Volume - Year To date	
Lots	0
Tonnes	0



Prompt Month	End of Month - Daily Settlement	Volume	Endof Month MOI
Aug 2019	\$32,383.42		
Sep 2019	\$32,498.42		
Oct 2019	\$32,613.42		
Nov 2019	\$32,728.42		
Dec 2019	\$32,843.42		
Jan 2020	\$32,958.42		
Feb 2020	\$33,073.42		
Mar 2020	\$33,188.42		
Apr 2020	\$33,303.42		
May 2020	\$33,418.42		
Jun 2020	\$33,533.42		
Jul 2020	\$33,648.42		
Aug 2020	\$33,763.42		
Sep 2020	\$33,878.42		
Oct 2020	\$33,993.42		



Front Month	
Average	\$29,928.59
Minimum	\$26,675.90
Maximum	\$32,383.42

Volume (Excl UNA) - Aug 2019	
Lots	0

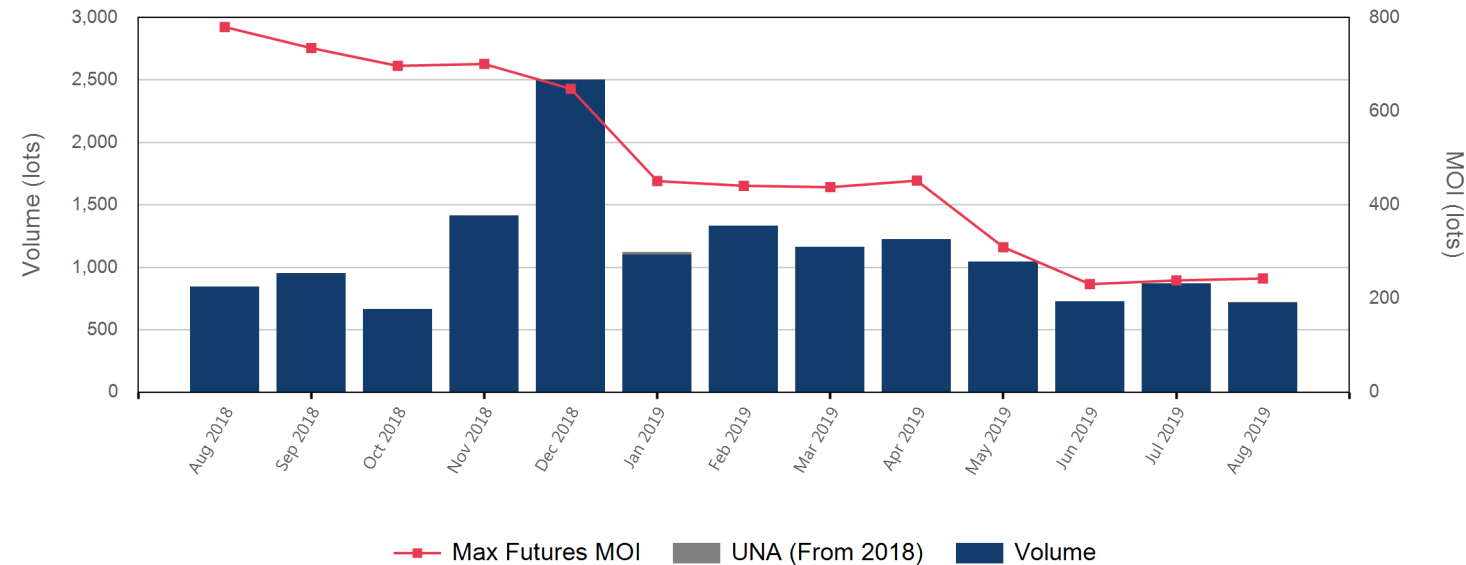
Volume - Aug 2019	
Lots	0
Tonnes	0

Volume - Year To date	
Lots	0
Tonnes	0

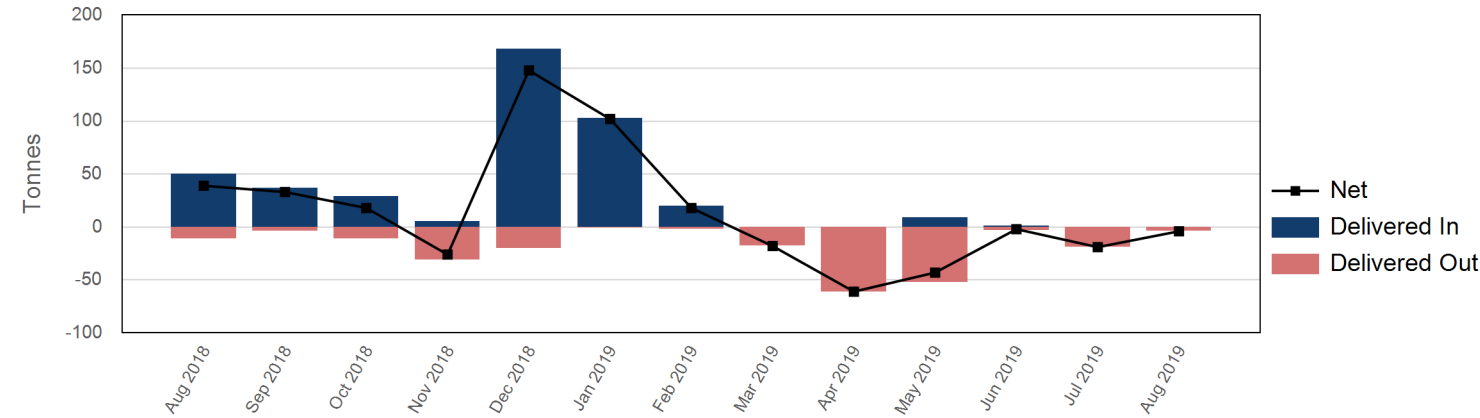
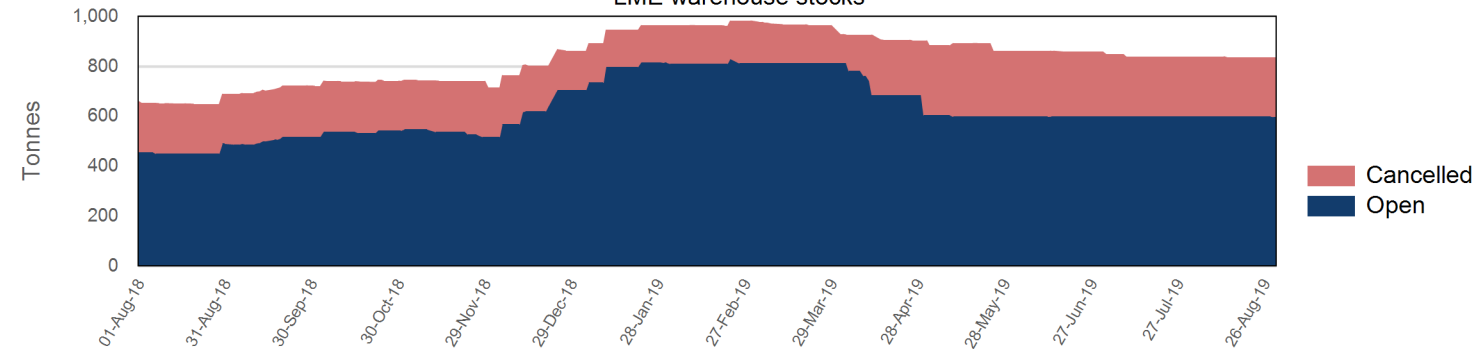
Official Price by prompt date



Volume & Futures Market Open Interest (MOI)



LME warehouse stocks



Official Cash Settlement Price

Average	\$30,004.76
Minimum	\$26,000.00
Maximum	\$31,500.00

Official 3 Month Price

Average	\$31,080.95
Minimum	\$26,500.00
Maximum	\$33,100.00

Volume (Excl UNA) - Aug 2019

Lots	717
------	-----

Volume - Aug 2019

Lots	719
Tonnes	719

Volume - Year To date

Lots	8,201
Tonnes	8,201

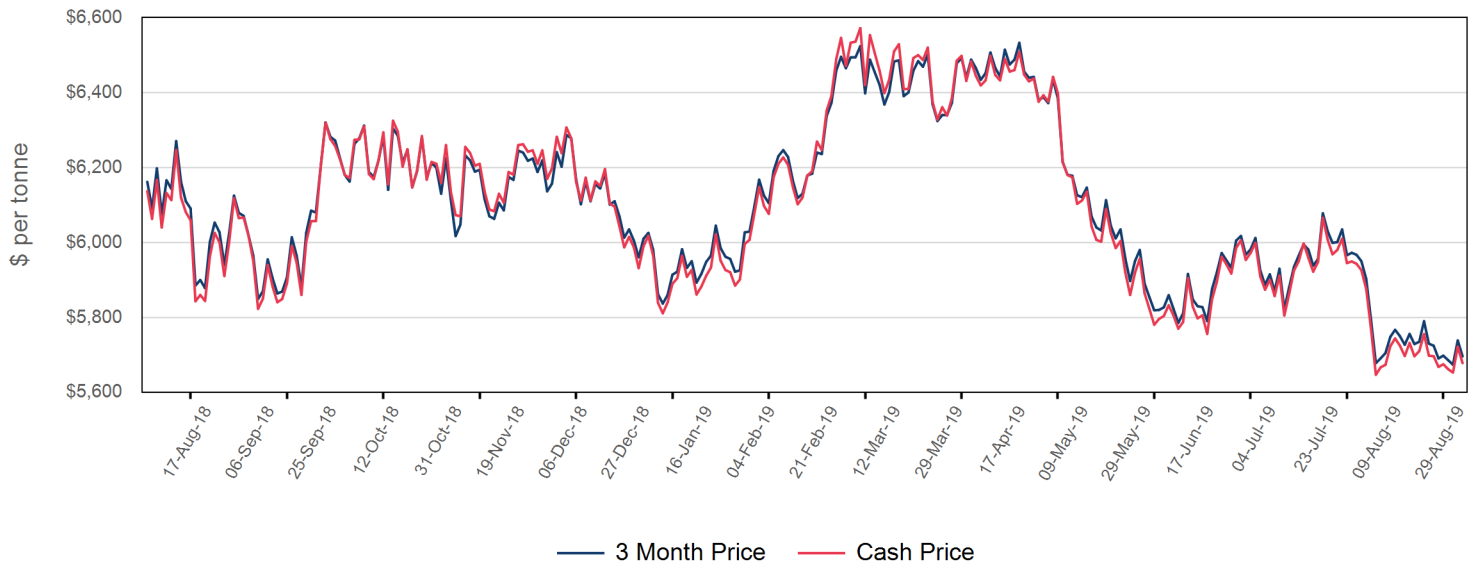
Warehouse stock - Aug 2019

Delivered In	0
Delivered Out	-4
Net	-4

Warehouse stock - Year to date

Delivered In	133
Delivered Out	-160
Net	-27

Official Price by prompt date



Official Cash Settlement Price	
Average	\$5,707.98
Minimum	\$5,647.00
Maximum	\$5,876.00

Official 3 Month Price	
Average	\$5,733.79
Minimum	\$5,674.00
Maximum	\$5,903.00

Volume (Excl UNA) - Aug 2019	
Lots	2,849,004

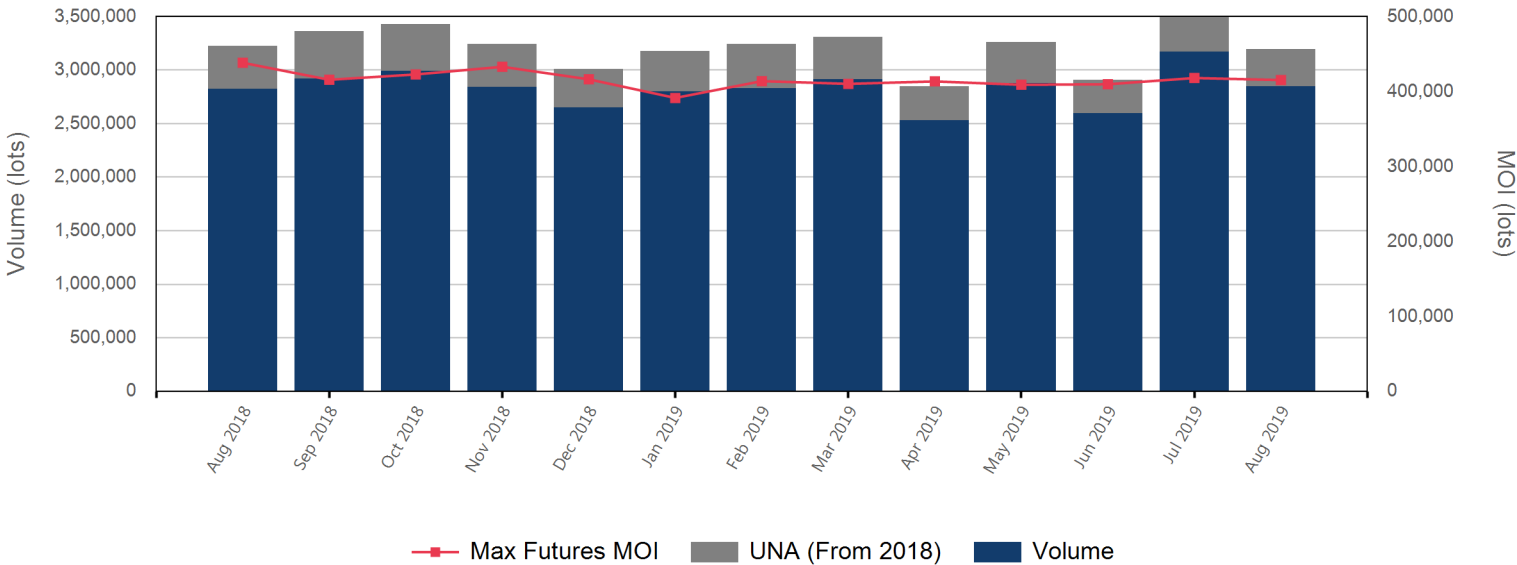
Volume - Aug 2019	
Lots	3,195,082
Tonnes	79,877,050

Volume - Year To date	
Lots	25,427,615
Tonnes	635,690,375

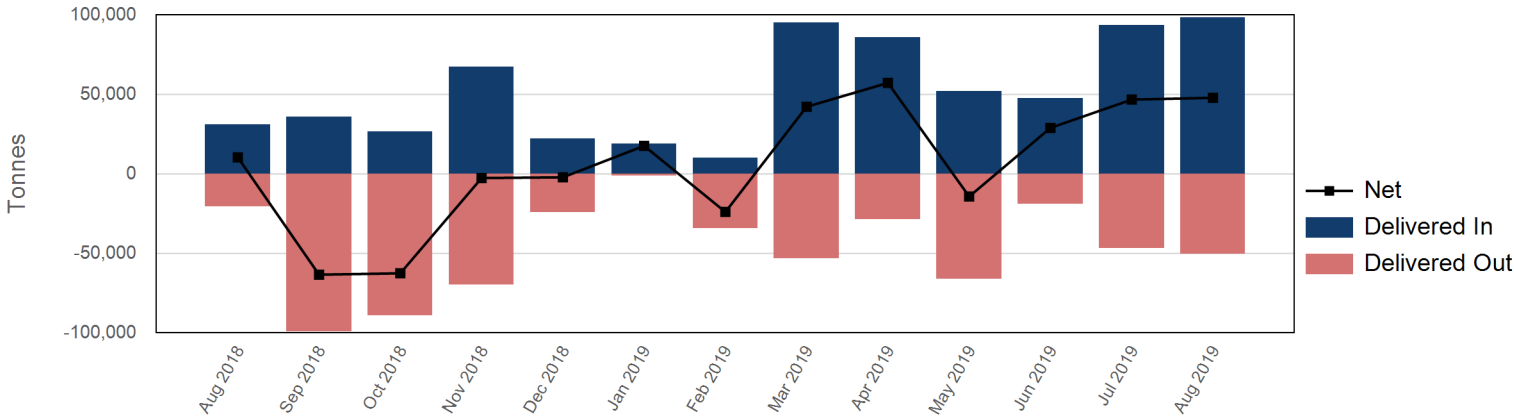
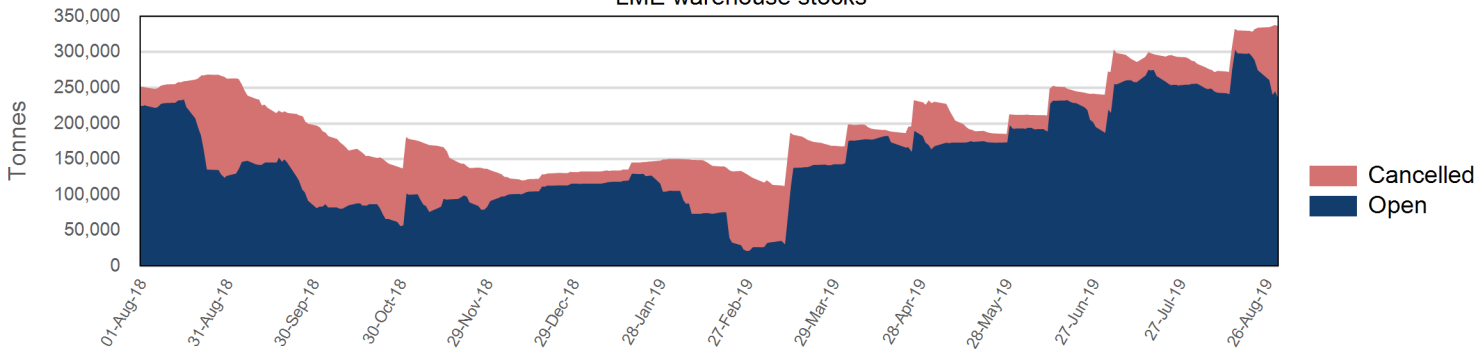
Warehouse stock - Aug 2019	
Delivered In	98,575
Delivered Out	-50,525
Net	48,050

Warehouse stock - Year to date	
Delivered In	502,800
Delivered Out	-299,125
Net	203,675

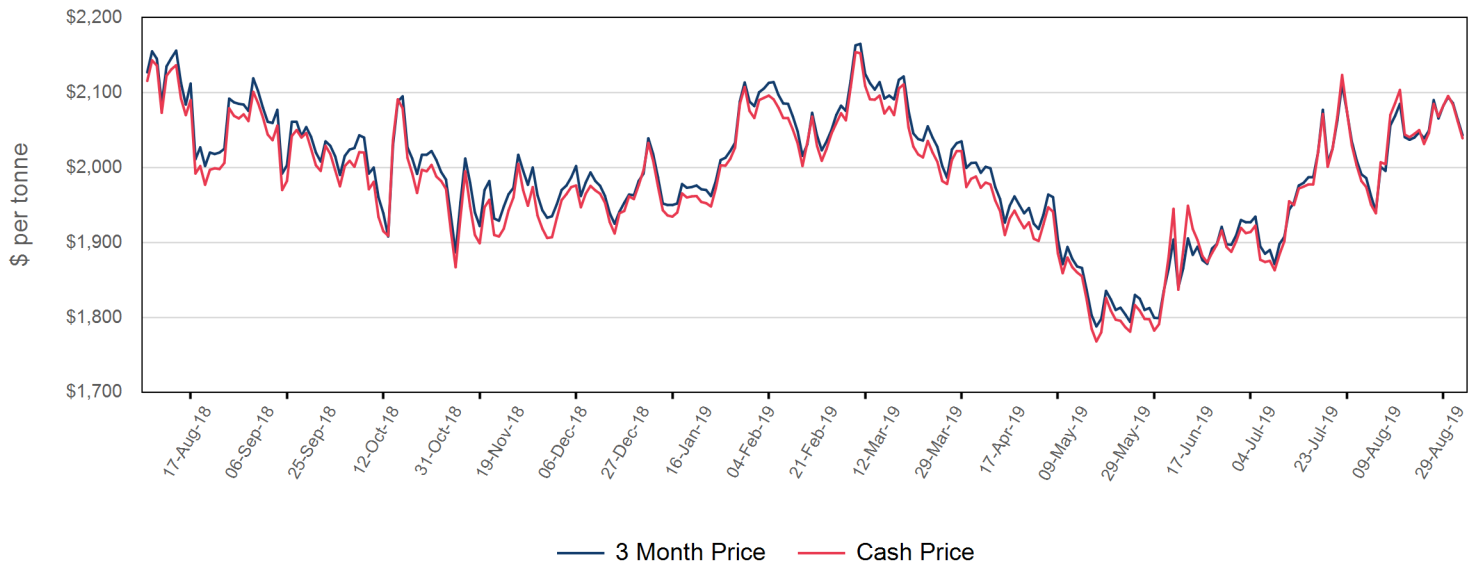
Volume & Futures Market Open Interest (MOI)



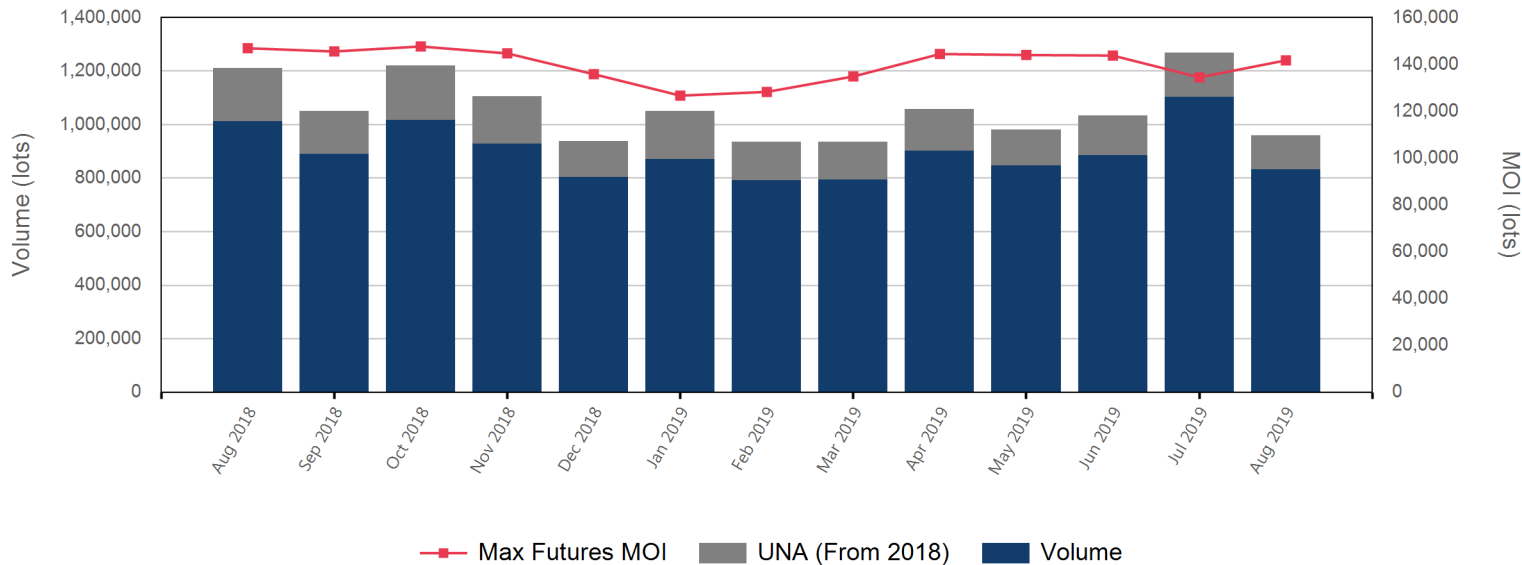
LME warehouse stocks



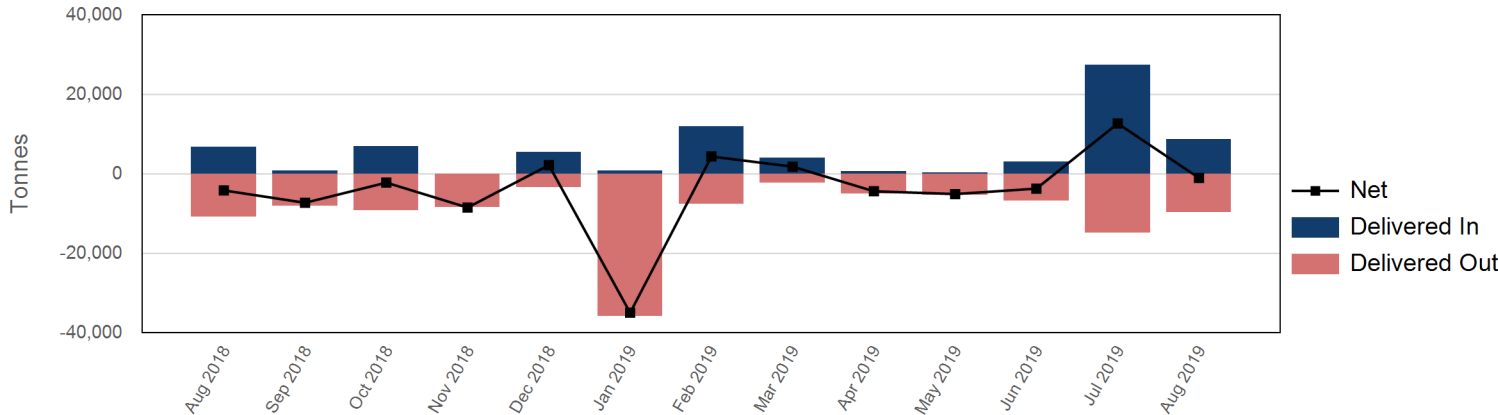
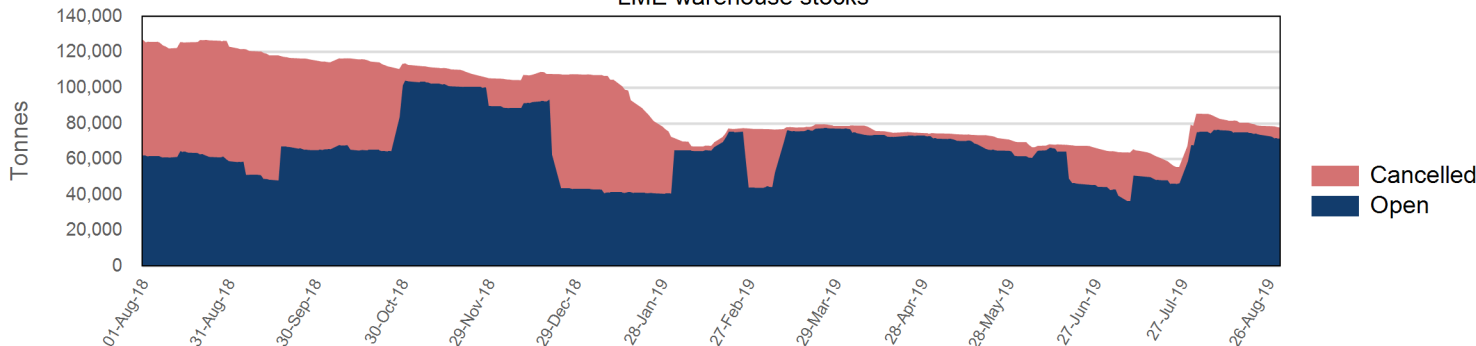
Official Price by prompt date



Volume & Futures Market Open Interest (MOI)



LME warehouse stocks



Official Cash Settlement Price	
Average	\$2,043.19
Minimum	\$1,939.00
Maximum	\$2,103.50

Official 3 Month Price	
Average	\$2,041.62
Minimum	\$1,942.00
Maximum	\$2,094.00

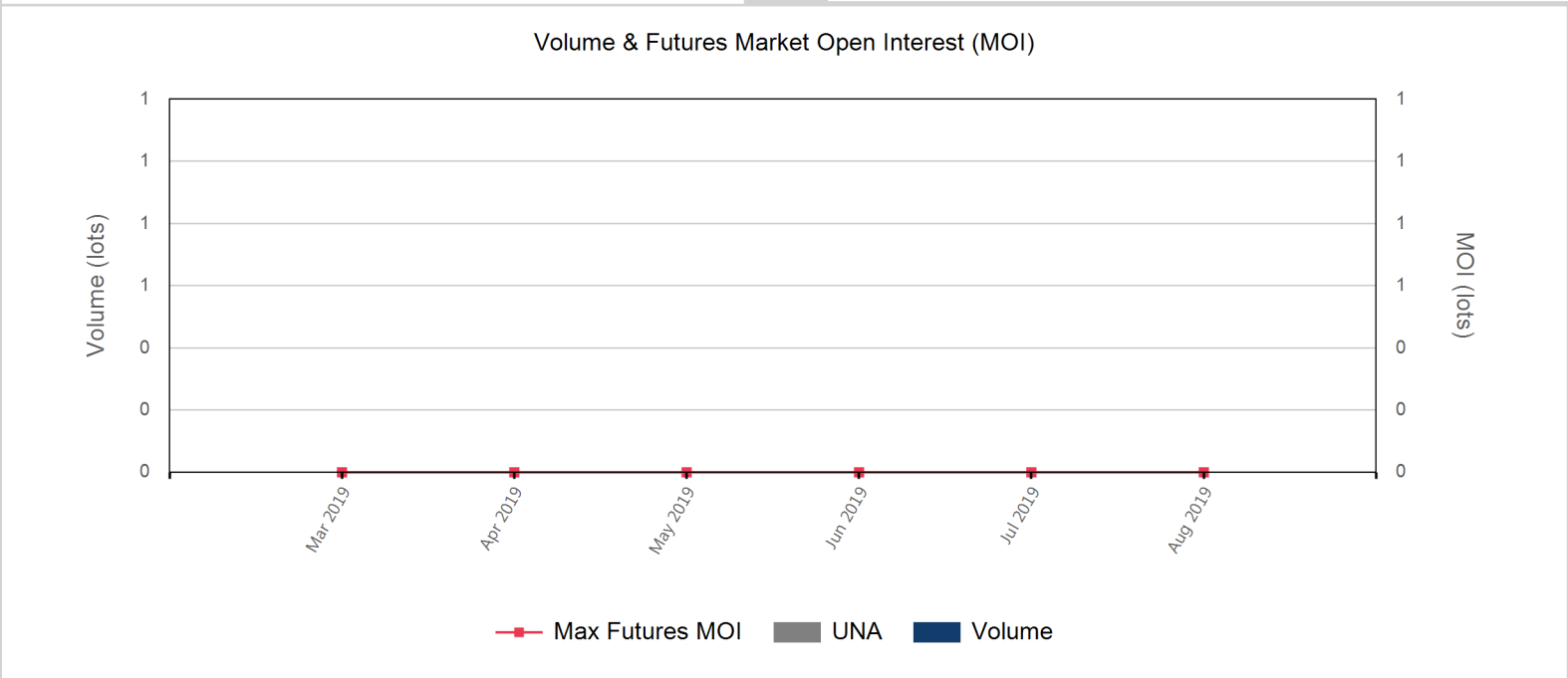
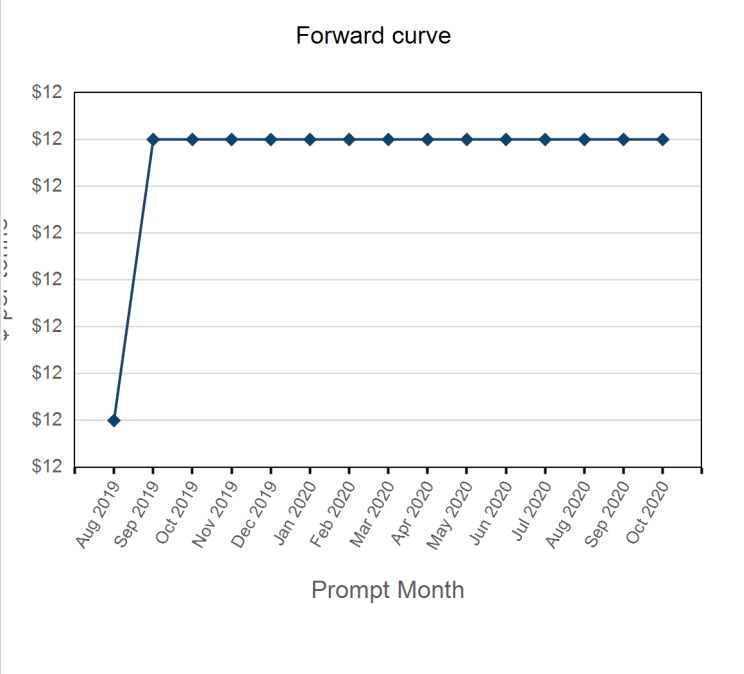
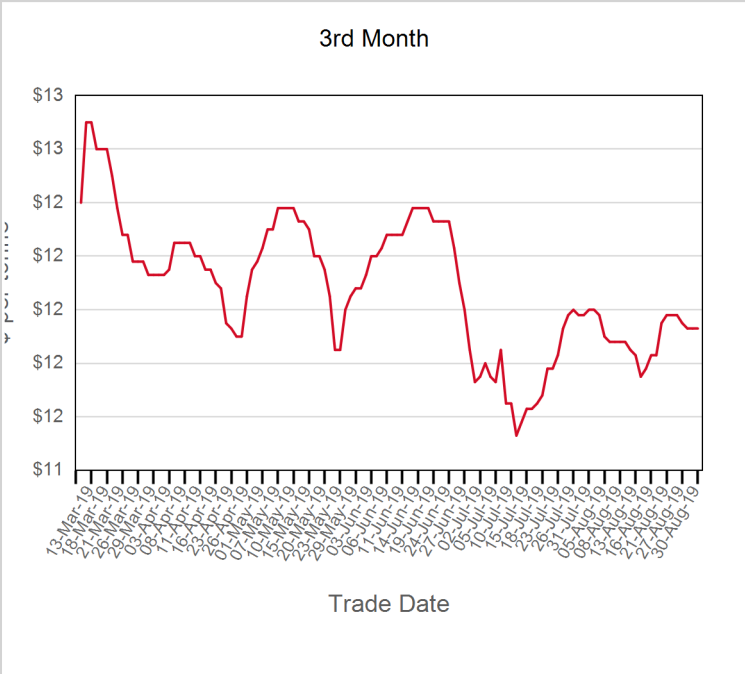
Volume (Excl UNA) - Aug 2019	
Lots	832,235

Volume - Aug 2019	
Lots	958,961
Tonnes	23,974,025

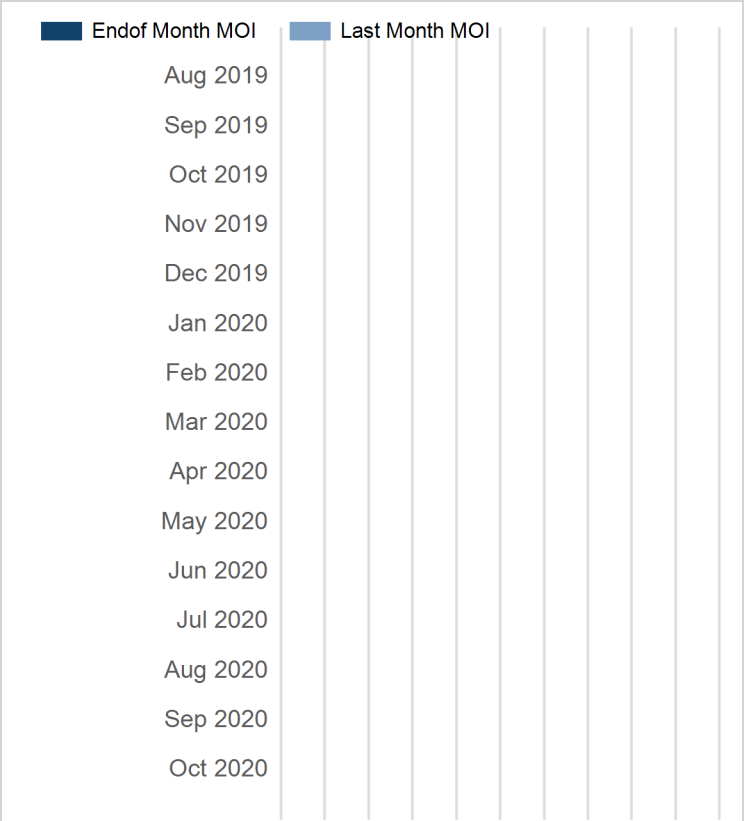
Volume - Year To date	
Lots	8,214,646
Tonnes	205,366,150

Warehouse stock - Aug 2019	
Delivered In	8,675
Delivered Out	-9,650
Net	-975

Warehouse stock - Year to date	
Delivered In	57,325
Delivered Out	-87,175
Net	-29,850



Prompt Month	End of Month - Daily Settlement	Volume	Endof Month MOI
Aug 2019	\$11.90		
Sep 2019	\$11.93		
Oct 2019	\$11.93		
Nov 2019	\$11.93		
Dec 2019	\$11.93		
Jan 2020	\$11.93		
Feb 2020	\$11.93		
Mar 2020	\$11.93		
Apr 2020	\$11.93		
May 2020	\$11.93		
Jun 2020	\$11.93		
Jul 2020	\$11.93		
Aug 2020	\$11.93		
Sep 2020	\$11.93		
Oct 2020	\$11.93		



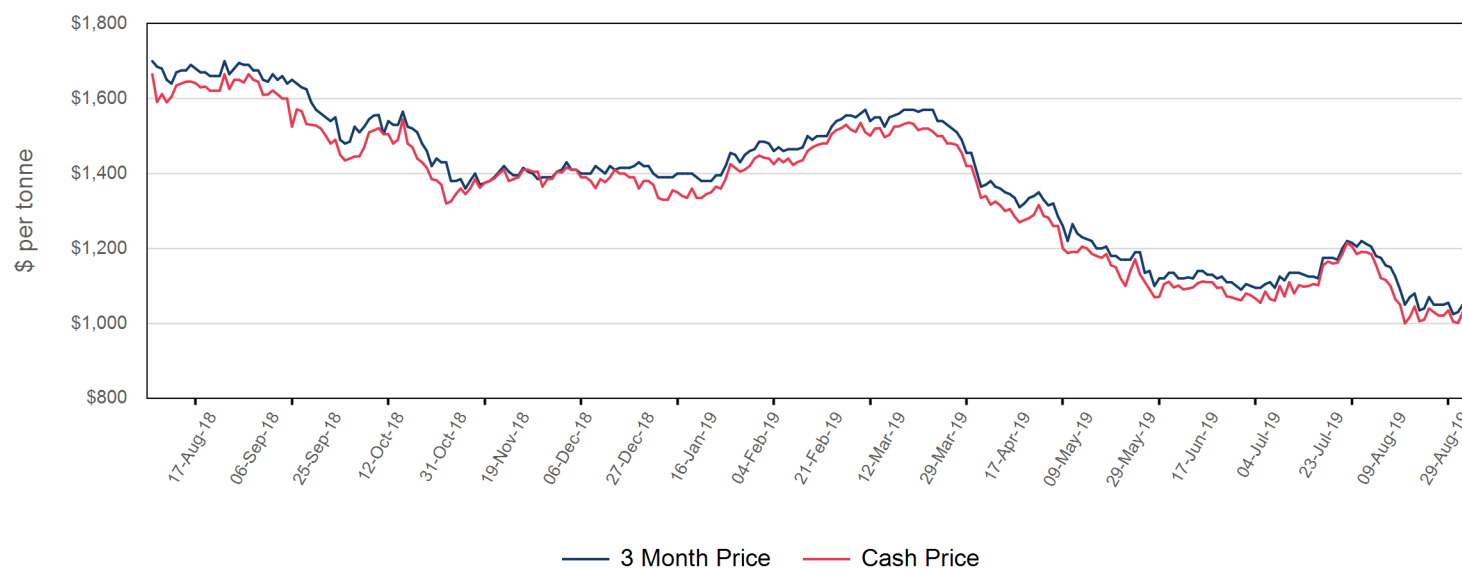
Front Month	
Average	\$11.89
Minimum	\$11.81
Maximum	\$12.00

Volume (Excl UNA) - Aug 2019	
Lots	0

Volume - Aug 2019	
Lots	0
Pounds	0

Volume - Year To date	
Lots	0
Pounds	0

Official Price by prompt date



Official Cash Settlement Price

Average	\$1,051.14
Minimum	\$1,000.00
Maximum	\$1,185.00

Official 3 Month Price

Average	\$1,085.48
Minimum	\$1,025.00
Maximum	\$1,205.00

Volume (Excl UNA) - Aug 2019

Lots	24,191
------	--------

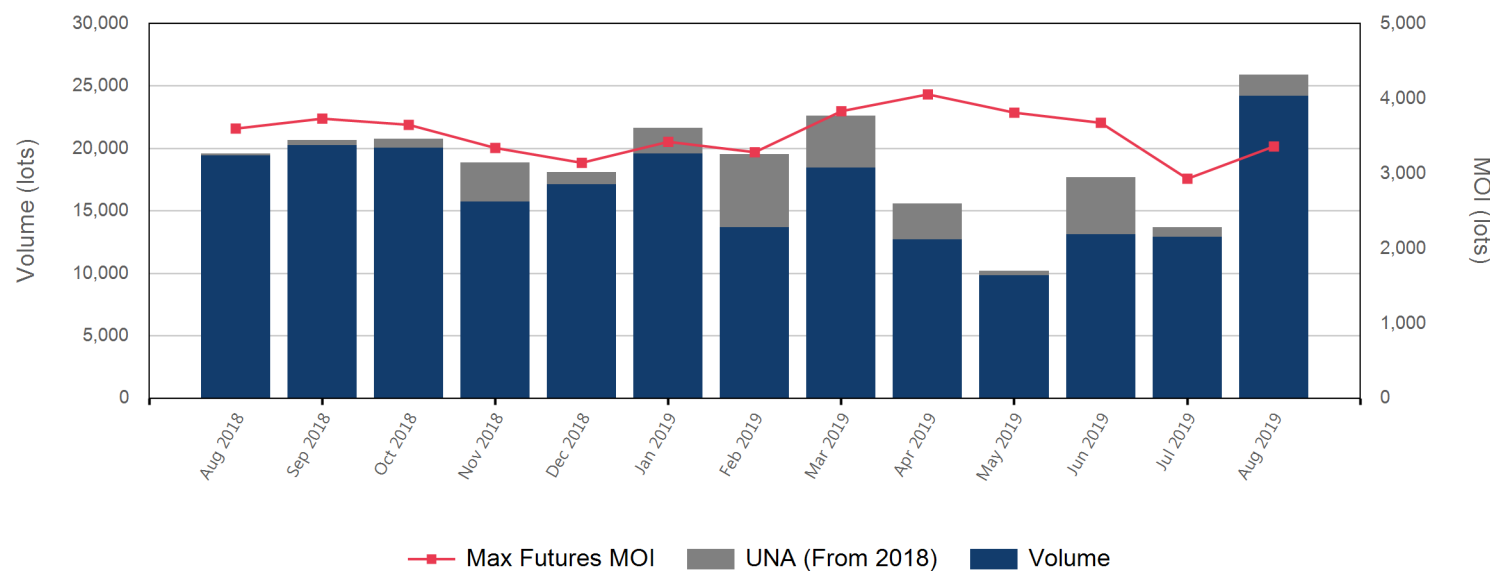
Volume - Aug 2019

Lots	25,867
Tonnes	517,340

Volume - Year To date

Lots	146,768
Tonnes	2,935,360

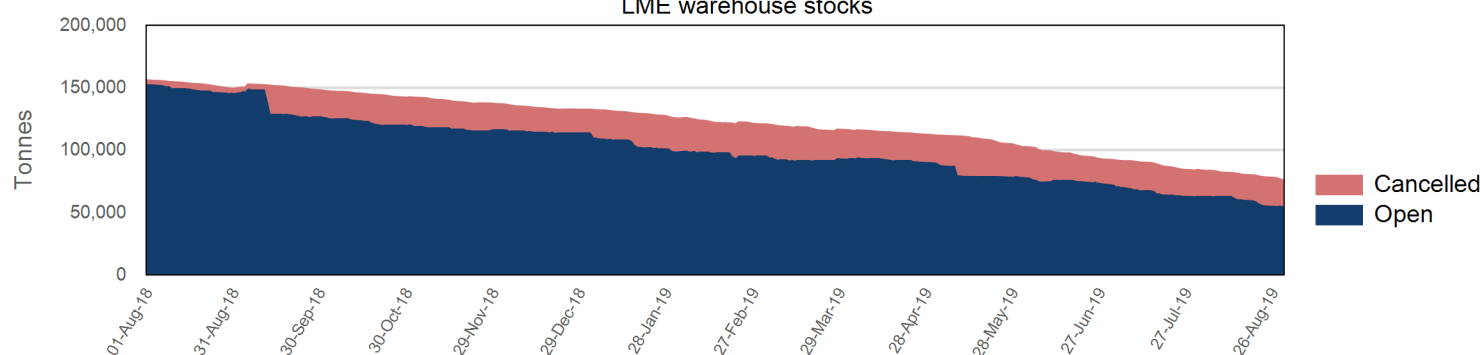
Volume & Futures Market Open Interest (MOI)



Warehouse stock - Aug 2019

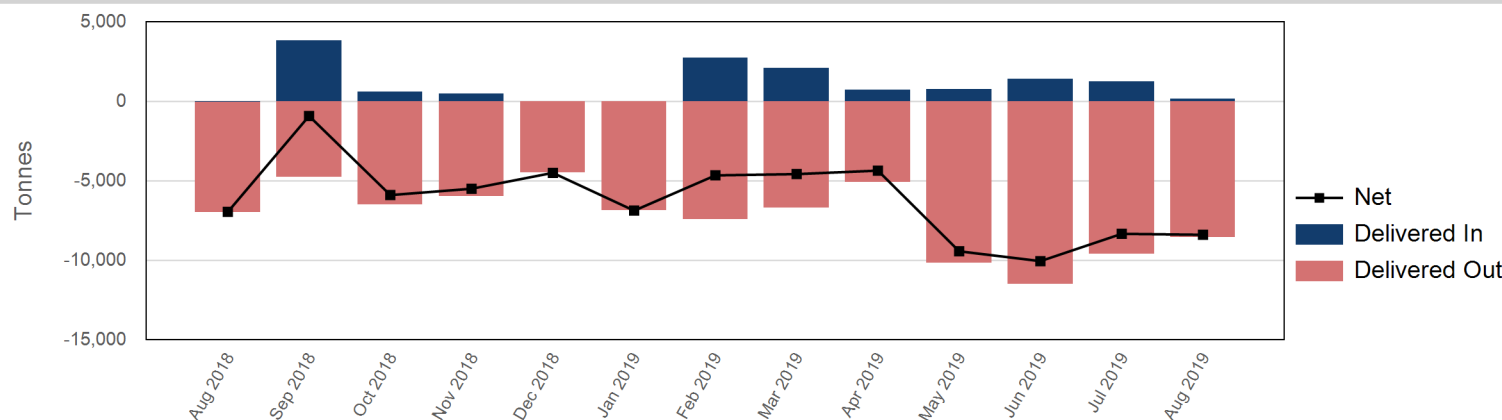
Delivered In	160
Delivered Out	-8,540
Net	-8,380

LME warehouse stocks

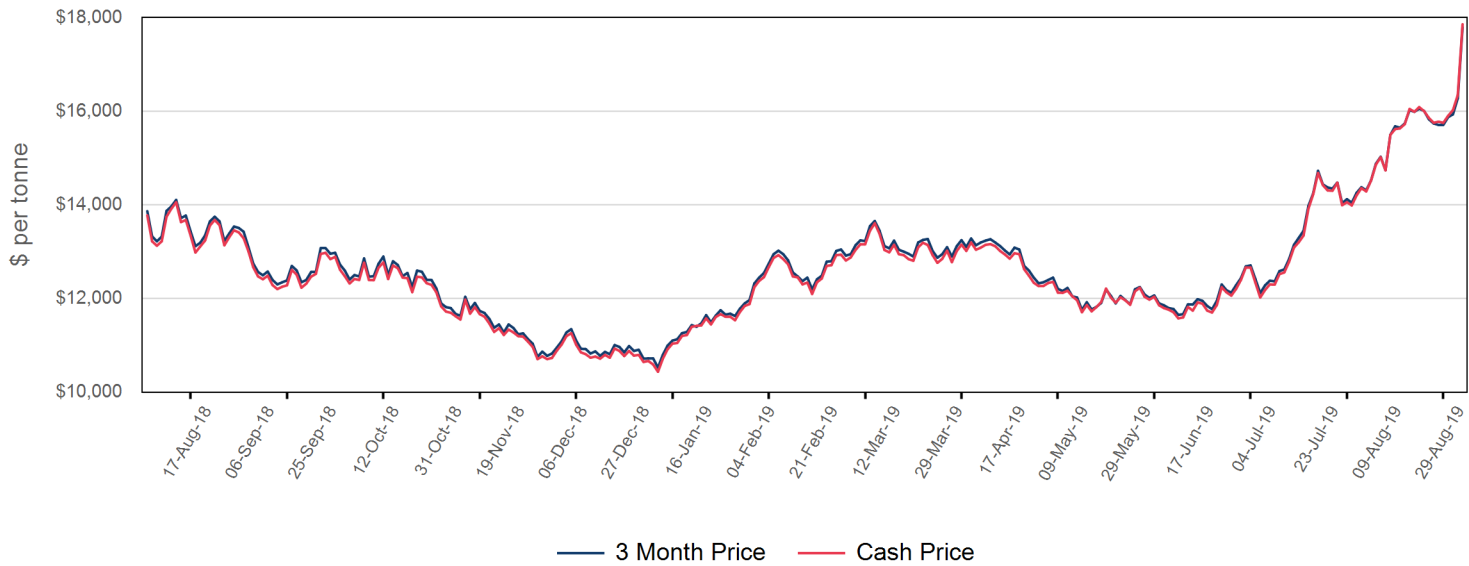


Warehouse stock - Year to date

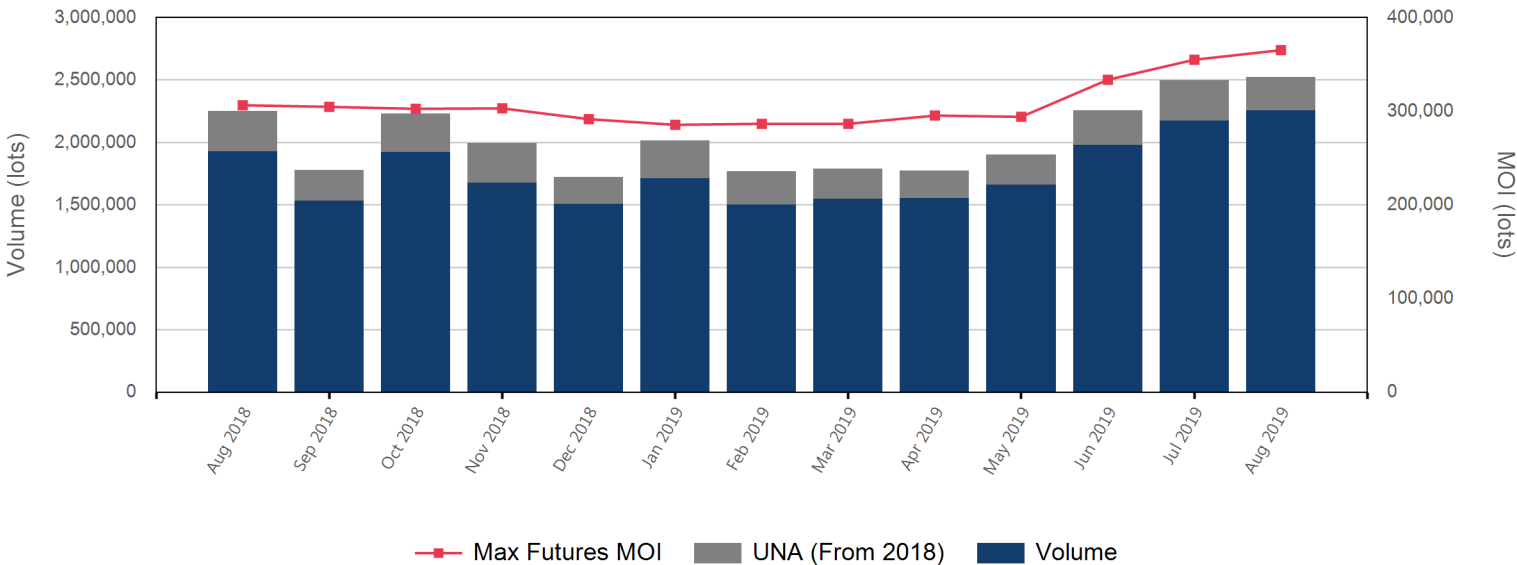
Delivered In	9,260
Delivered Out	-65,820
Net	-56,560



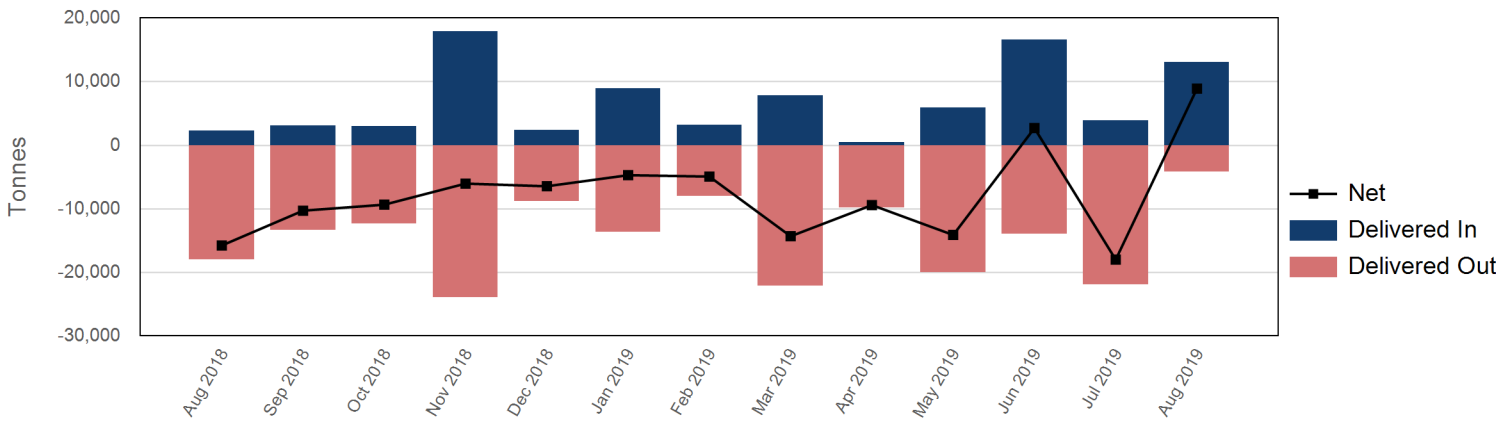
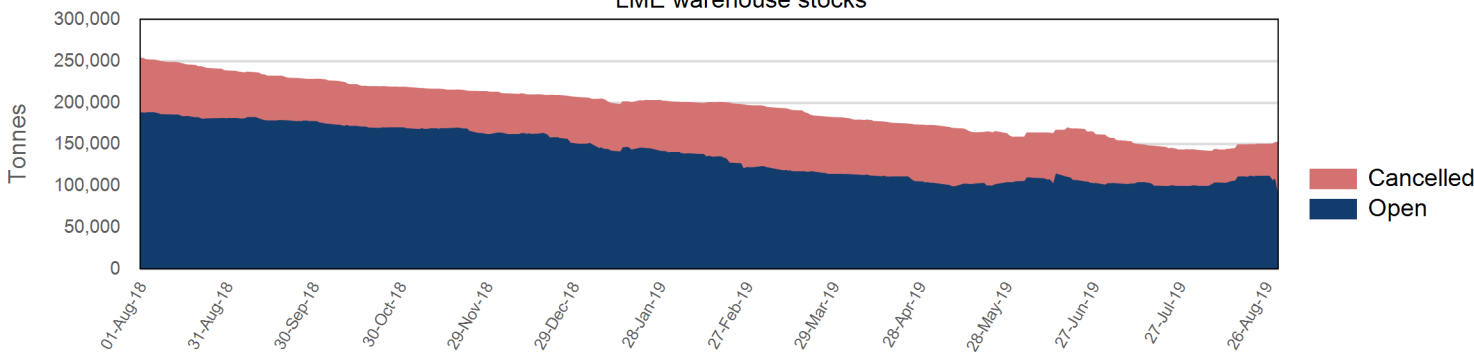
Official Price by prompt date



Volume & Futures Market Open Interest (MOI)



LME warehouse stocks



Official Cash Settlement Price	
Average	\$15,682.14
Minimum	\$14,290.00
Maximum	\$17,860.00

Official 3 Month Price	
Average	\$15,667.38
Minimum	\$14,315.00
Maximum	\$17,800.00

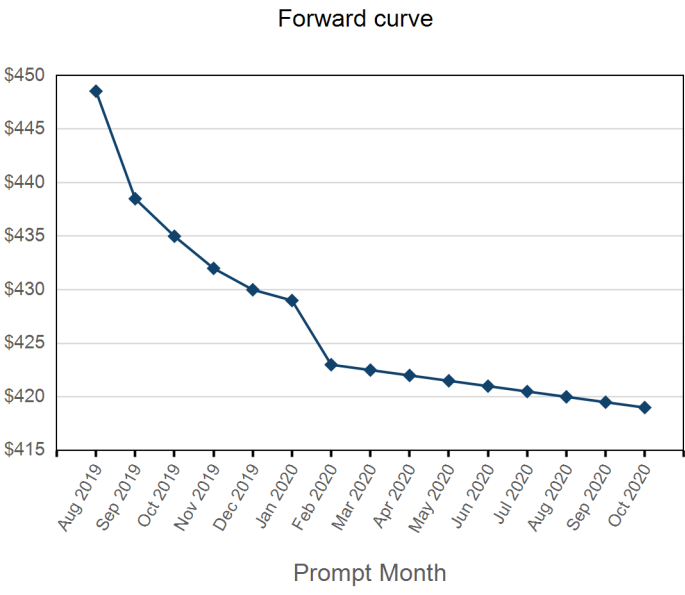
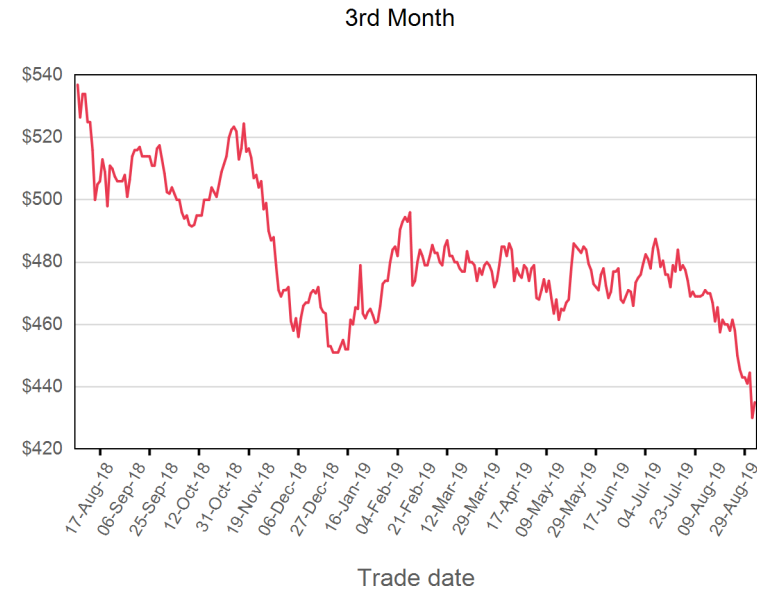
Volume (Excl UNA) - Aug 2019	
Lots	2,256,618

Volume - Aug 2019	
Lots	2,521,120
Tonnes	15,126,720

Volume - Year To date	
Lots	16,517,101
Tonnes	99,102,606

Warehouse stock - Aug 2019	
Delivered In	13,104
Delivered Out	-4,170
Net	8,934

Warehouse stock - Year to date	
Delivered In	59,904
Delivered Out	-113,700
Net	-53,796

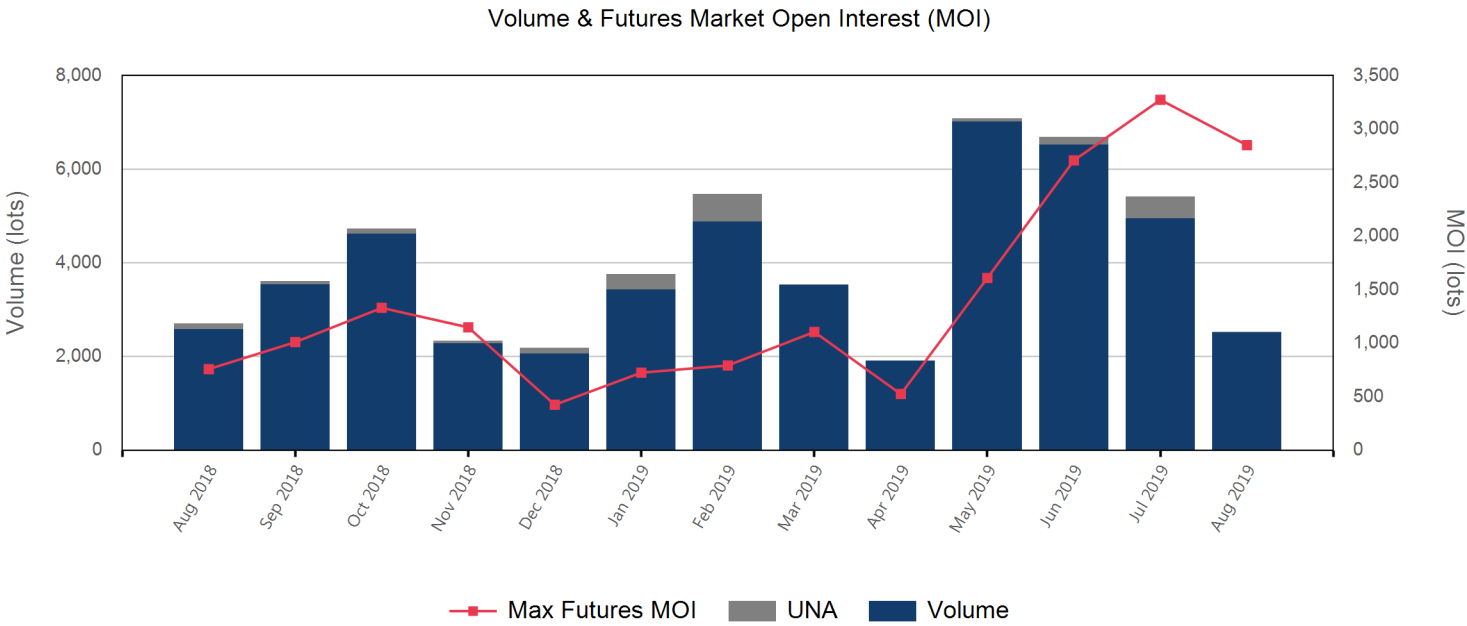


Front Month	
Average	\$453.00
Minimum	\$444.50
Maximum	\$465.00

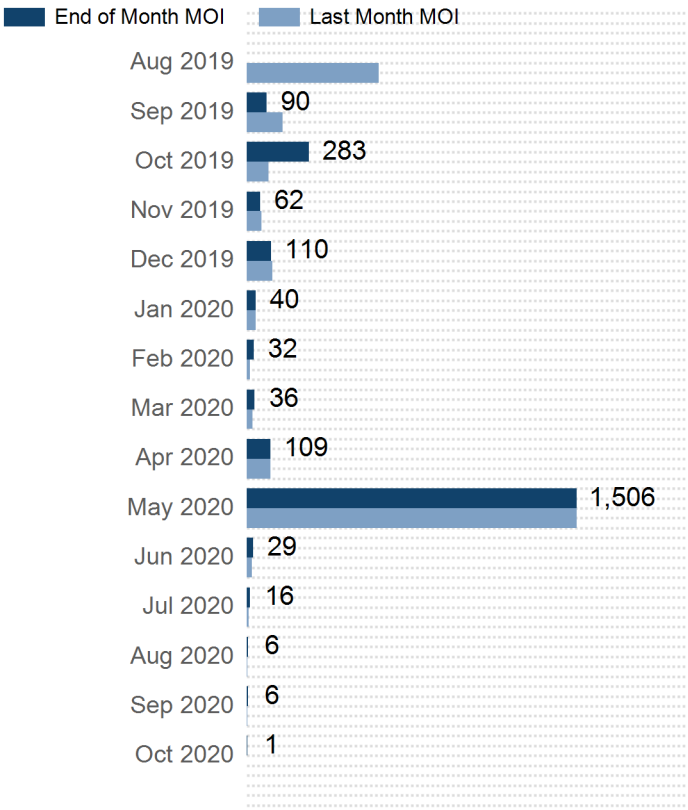
Volume (Excl UNA) - Aug 2019	
Lots	2,516

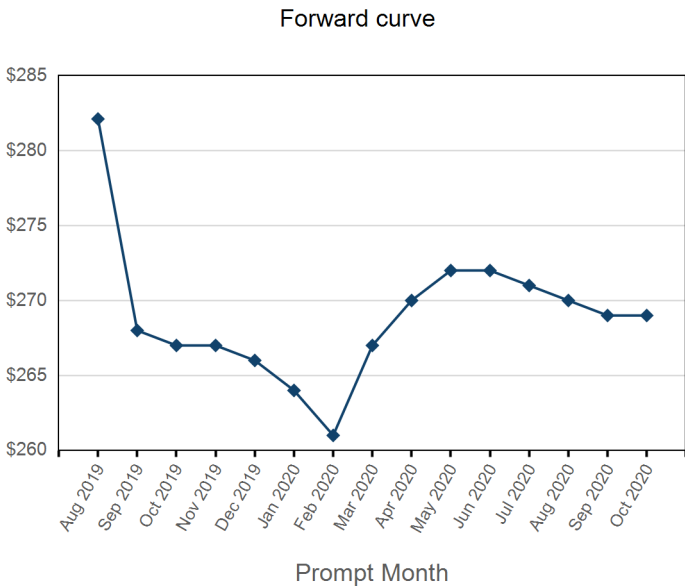
Volume - Aug 2019	
Lots	2,528
Tonnes	25,280

Volume - Year To date	
Lots	36,392
Tonnes	363,920



Prompt Month	End of Month - Daily Settlement	Volume	End of Month MOI
Aug 2019	\$448.55	199	
Sep 2019	\$438.50	604	90
Oct 2019	\$435.00	709	283
Nov 2019	\$432.00	223	62
Dec 2019	\$430.00	281	110
Jan 2020	\$429.00	129	40
Feb 2020	\$423.00	102	32
Mar 2020	\$422.50	40	36
Apr 2020	\$422.00	51	109
May 2020	\$421.50	37	1,506
Jun 2020	\$421.00	53	29
Jul 2020	\$420.50	34	16
Aug 2020	\$420.00	39	6
Sep 2020	\$419.50	24	6
Oct 2020	\$419.00	3	1



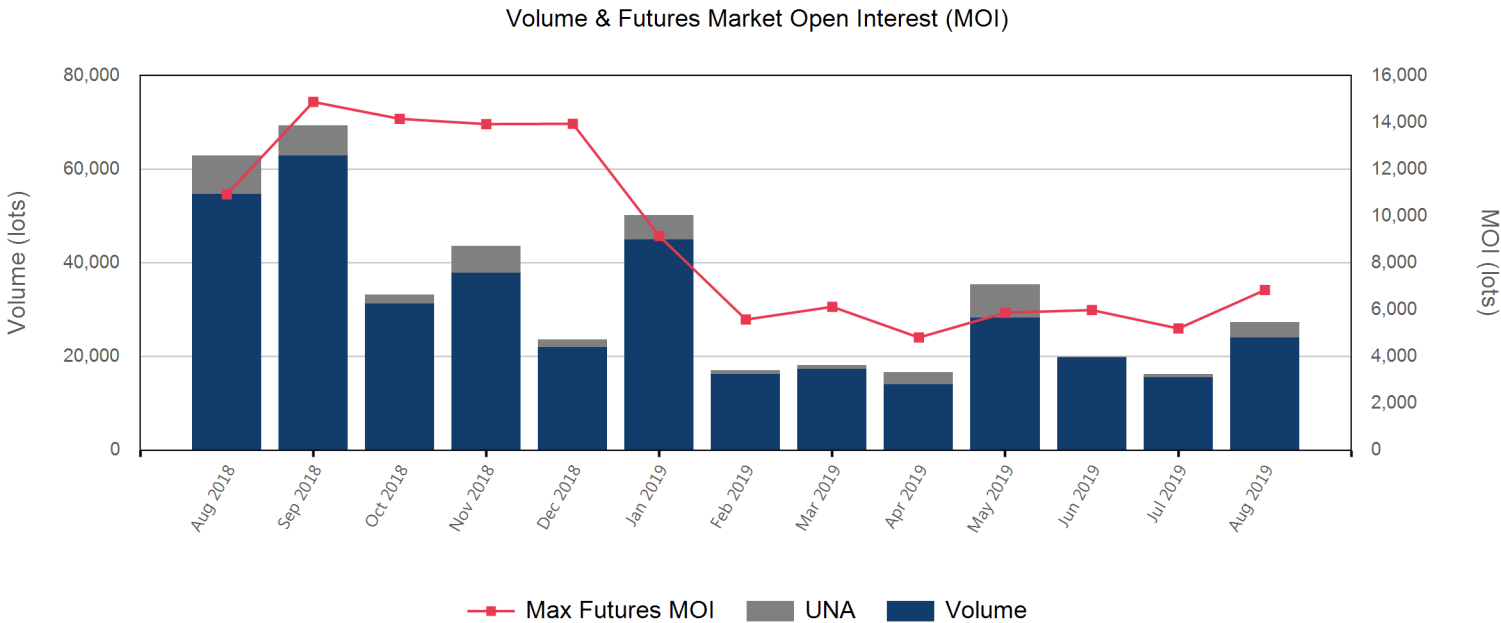


Front Month	
Average	\$287.05
Minimum	\$282.00
Maximum	\$293.00

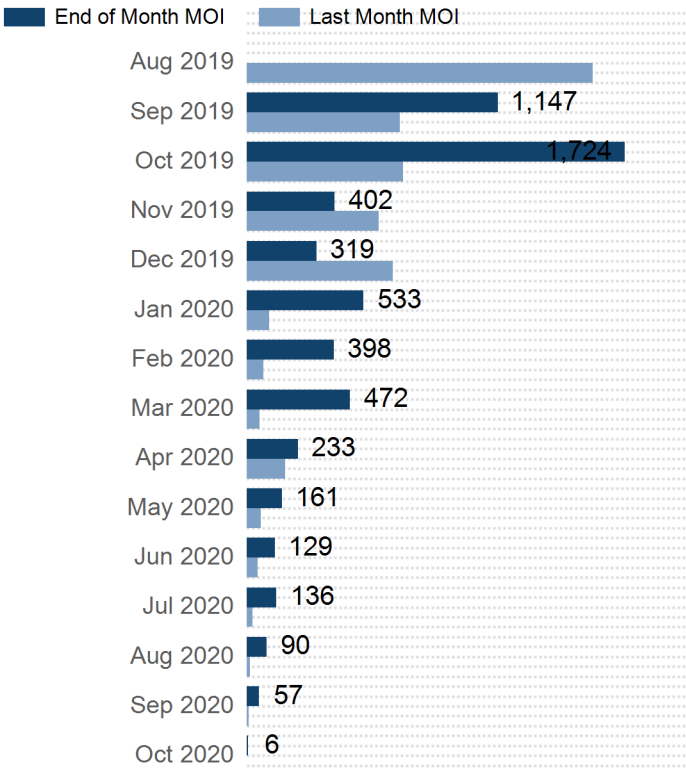
Volume (Excl UNA) - Aug 2019	
Lots	24,049

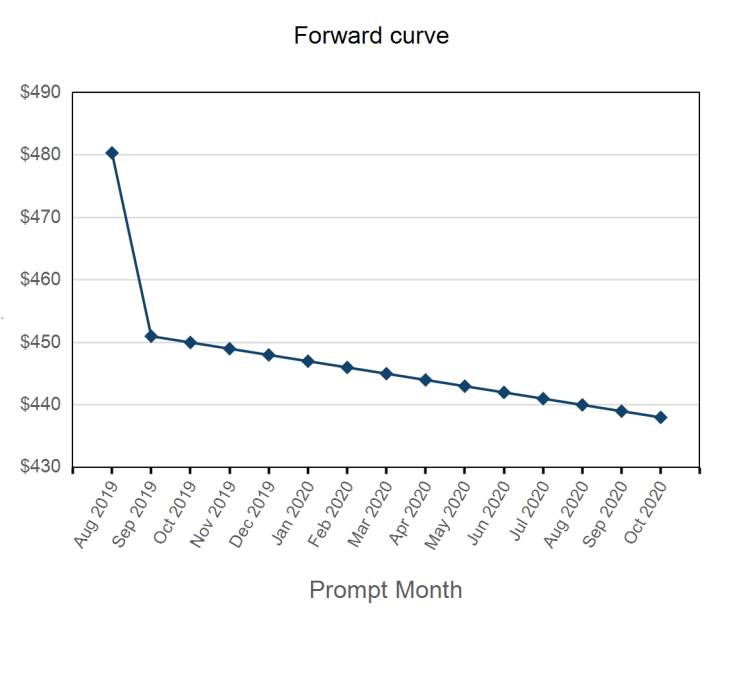
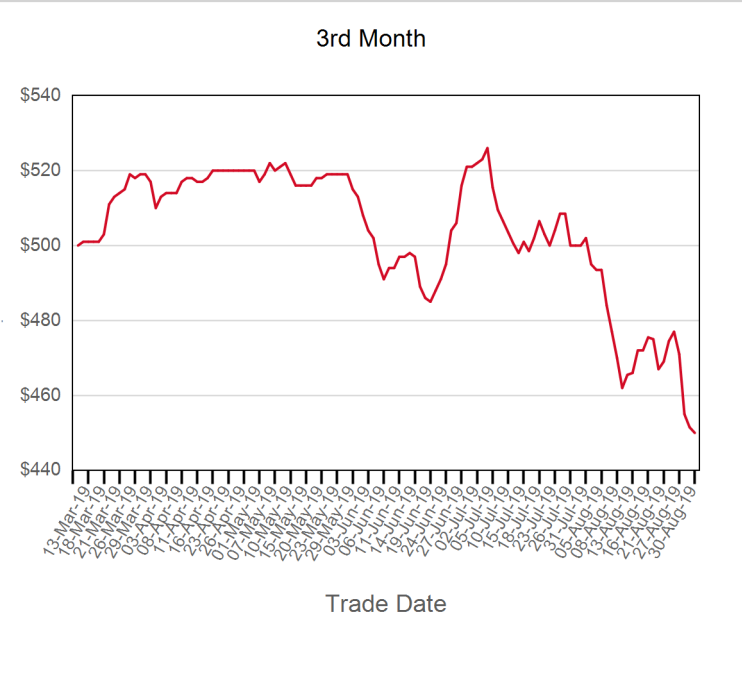
Volume - Aug 2019	
Lots	27,360
Tonnes	273,600

Volume - Year To date	
Lots	200,774
Tonnes	2,007,740



Prompt Month	End of Month - Daily Settlement	Volume	End of Month MOI
Aug 2019	\$282.11	708	
Sep 2019	\$268.00	4,926	1,147
Oct 2019	\$267.00	7,531	1,724
Nov 2019	\$267.00	3,544	402
Dec 2019	\$266.00	2,355	319
Jan 2020	\$264.00	2,020	533
Feb 2020	\$261.00	1,923	398
Mar 2020	\$267.00	1,911	472
Apr 2020	\$270.00	473	233
May 2020	\$272.00	566	161
Jun 2020	\$272.00	534	129
Jul 2020	\$271.00	362	136
Aug 2020	\$270.00	288	90
Sep 2020	\$269.00	201	57
Oct 2020	\$269.00	18	6



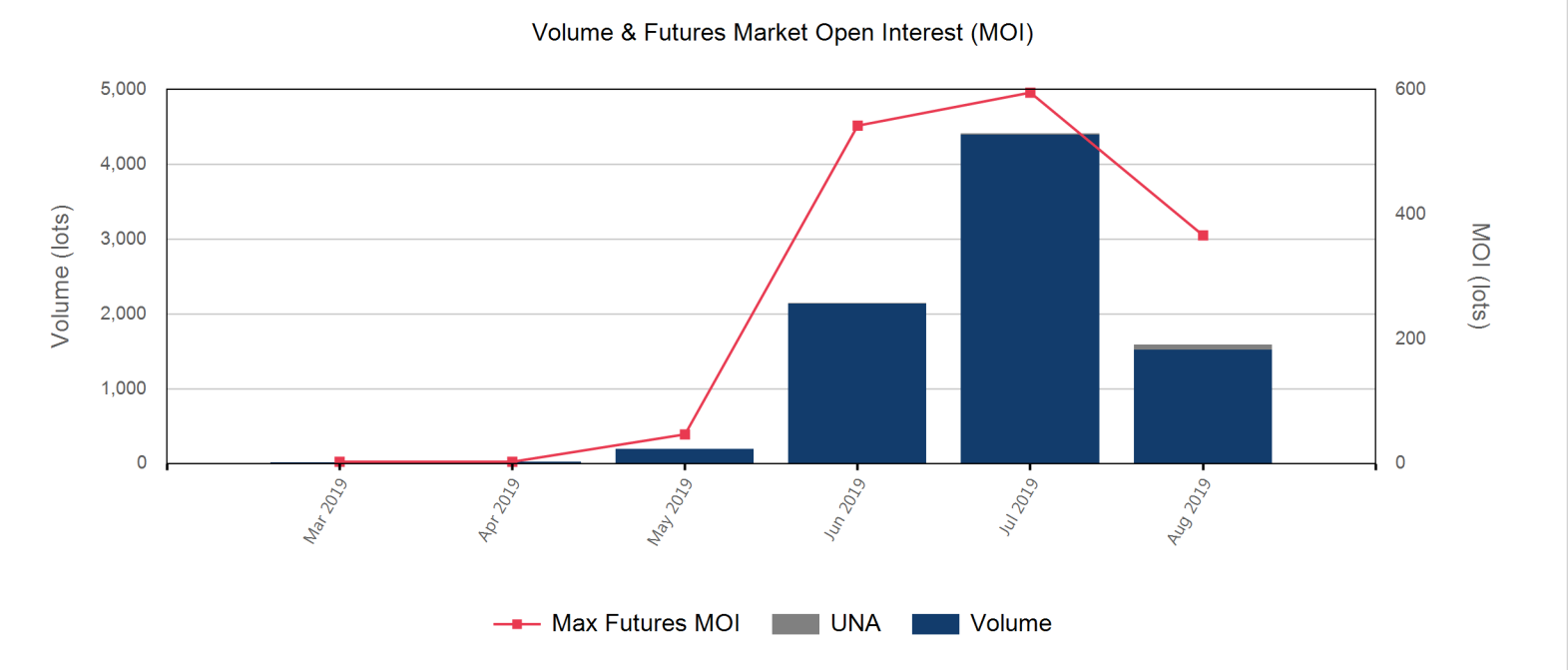


Front Month	
Average	\$486.45
Minimum	\$480.00
Maximum	\$505.00

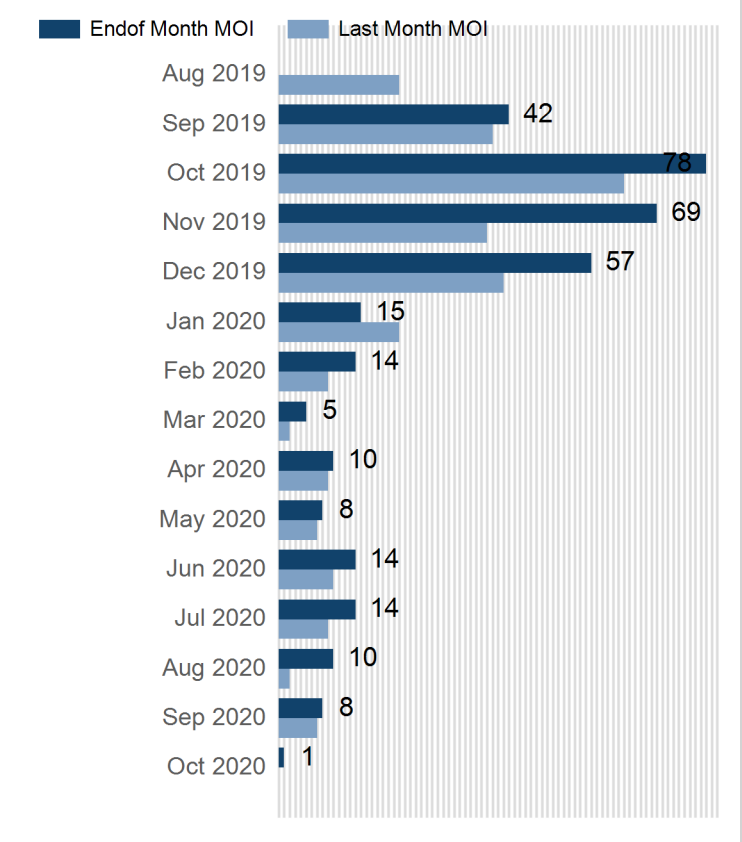
Volume (Excl UNA) - Aug 2019	
Lots	1,516

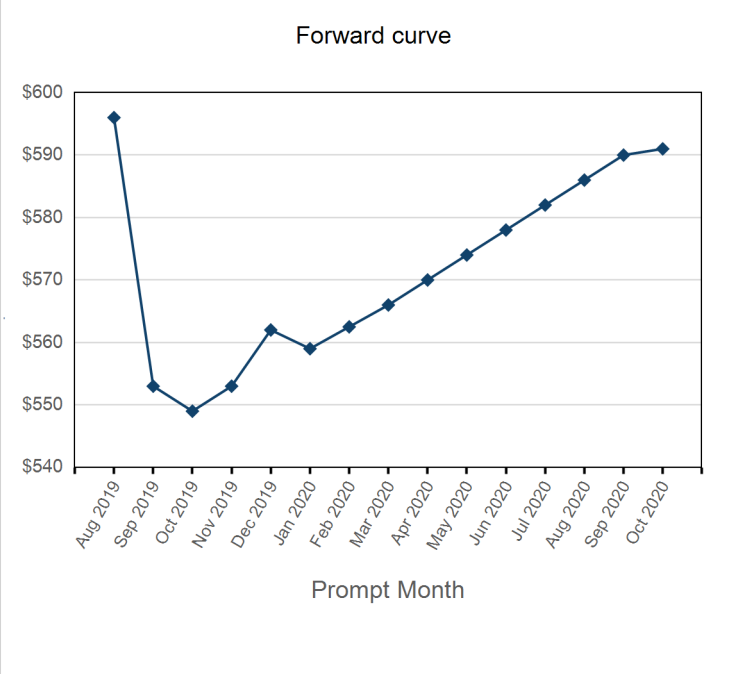
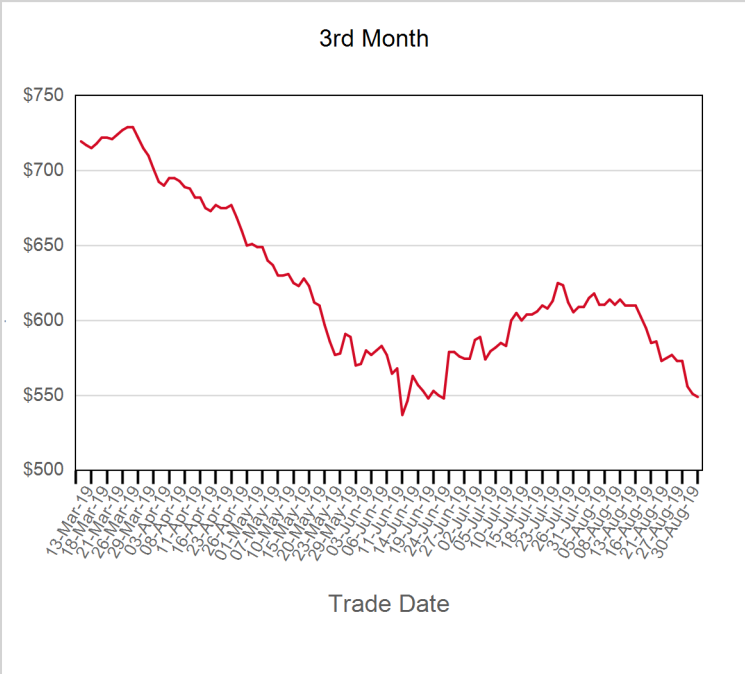
Volume - Aug 2019	
Lots	1,586
Tonnes	15,860

Volume - Year To date	
Lots	8,356
Tonnes	83,560



Prompt Month	End of Month - Daily Settlement	Volume	Endof Month MOI
Aug 2019	\$480.35	18	
Sep 2019	\$451.00	283	42
Oct 2019	\$450.00	449	78
Nov 2019	\$449.00	181	69
Dec 2019	\$448.00	138	57
Jan 2020	\$447.00	173	15
Feb 2020	\$446.00	104	14
Mar 2020	\$445.00	34	5
Apr 2020	\$444.00	38	10
May 2020	\$443.00	34	8
Jun 2020	\$442.00	39	14
Jul 2020	\$441.00	25	14
Aug 2020	\$440.00	37	10
Sep 2020	\$439.00	24	8
Oct 2020	\$438.00	9	1



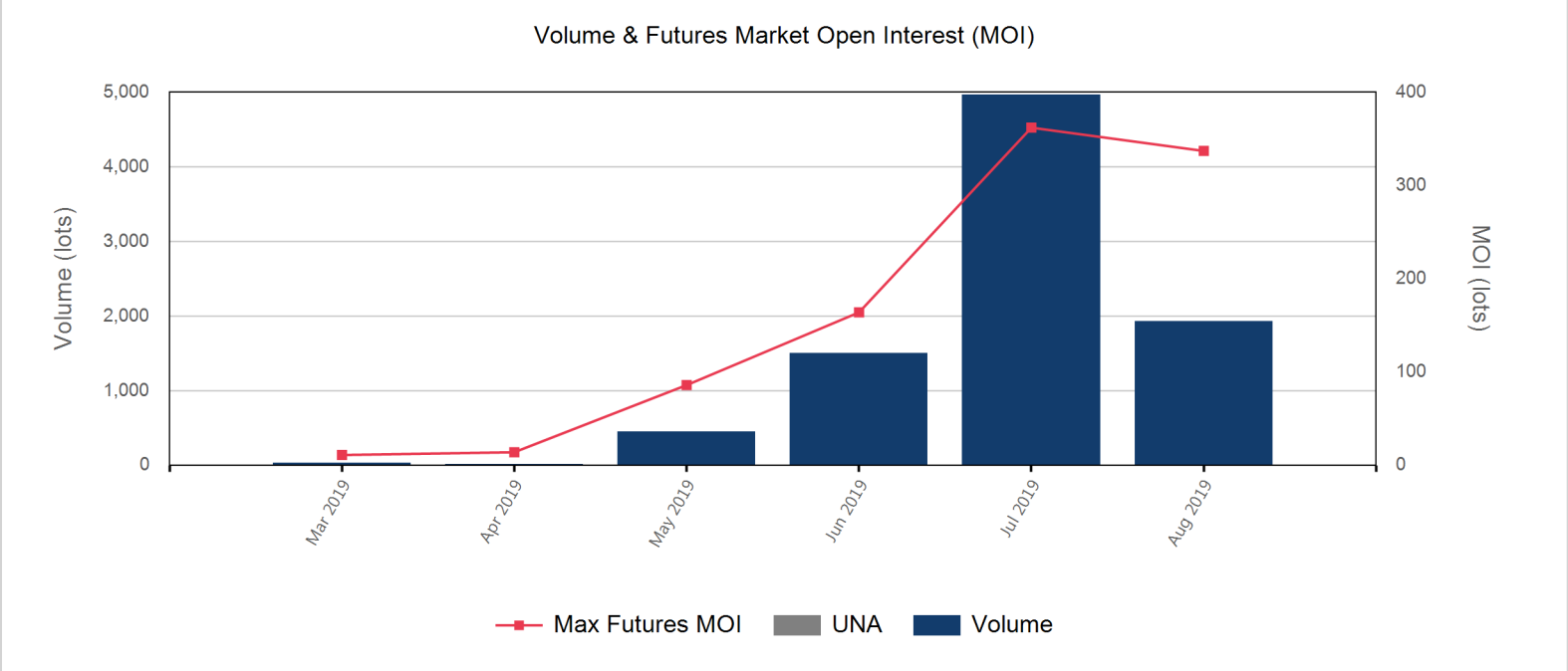


Front Month	
Average	\$594.86
Minimum	\$587.00
Maximum	\$603.00

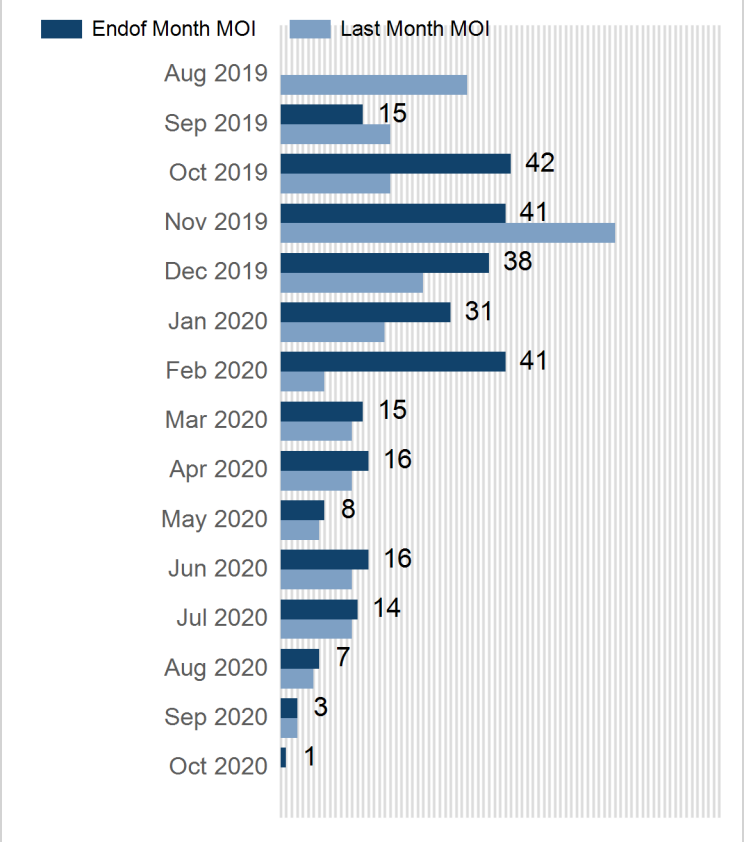
Volume (Excl UNA) - Aug 2019	
Lots	1,931

Volume - Aug 2019	
Lots	1,931
Short tons	19,310

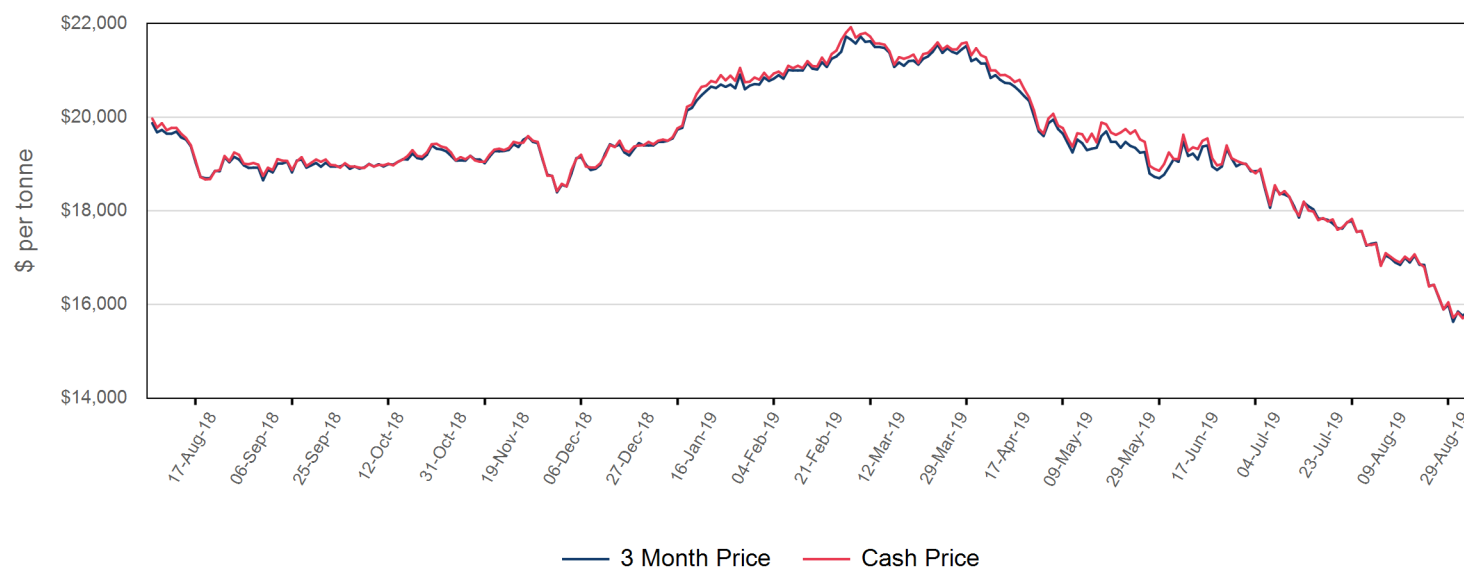
Volume - Year To date	
Lots	8,896
Short tons	88,960



Prompt Month	End of Month - Daily Settlement	Volume	Endof Month MOI
Aug 2019	\$596.00	102	
Sep 2019	\$553.00	331	15
Oct 2019	\$549.00	253	42
Nov 2019	\$553.00	295	41
Dec 2019	\$562.00	255	38
Jan 2020	\$559.00	212	31
Feb 2020	\$562.50	197	41
Mar 2020	\$566.00	43	15
Apr 2020	\$570.00	46	16
May 2020	\$574.00	44	8
Jun 2020	\$578.00	51	16
Jul 2020	\$582.00	39	14
Aug 2020	\$586.00	27	7
Sep 2020	\$590.00	33	3
Oct 2020	\$591.00	3	1



Official Price by prompt date



Official Cash Settlement Price

Average	\$16,577.14
Minimum	\$15,710.00
Maximum	\$17,300.00

Official 3 Month Price

Average	\$16,566.90
Minimum	\$15,635.00
Maximum	\$17,320.00

Volume (Excl UNA) - Aug 2019

Lots	97,979
------	--------

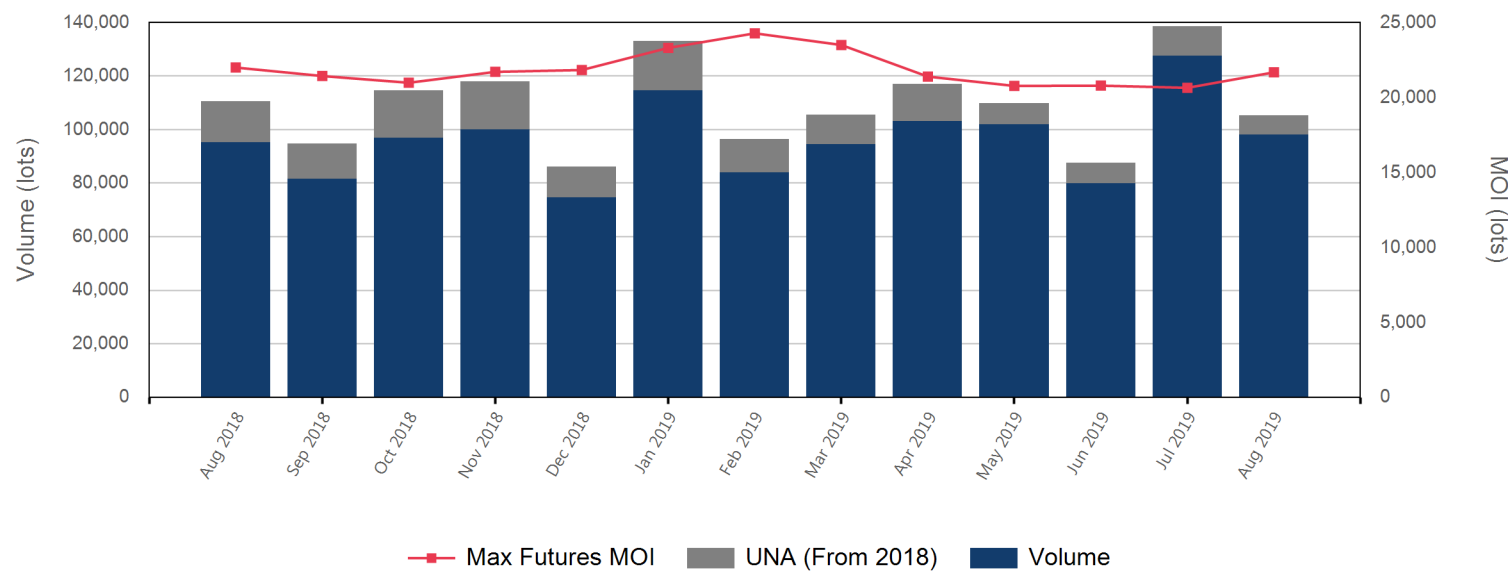
Volume - Aug 2019

Lots	105,156
Tonnes	525,780

Volume - Year To date

Lots	892,814
Tonnes	4,464,070

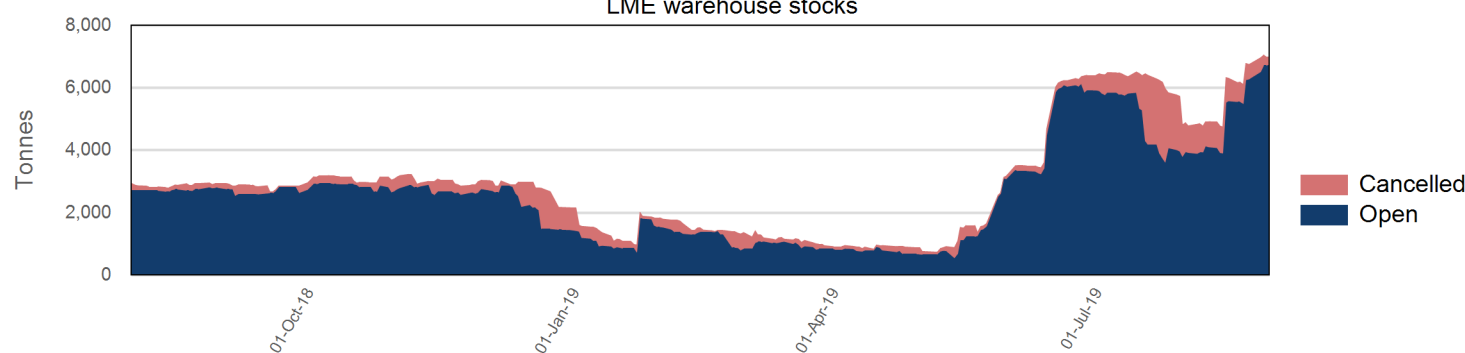
Volume & Futures Market Open Interest (MOI)



Warehouse stock - Aug 2019

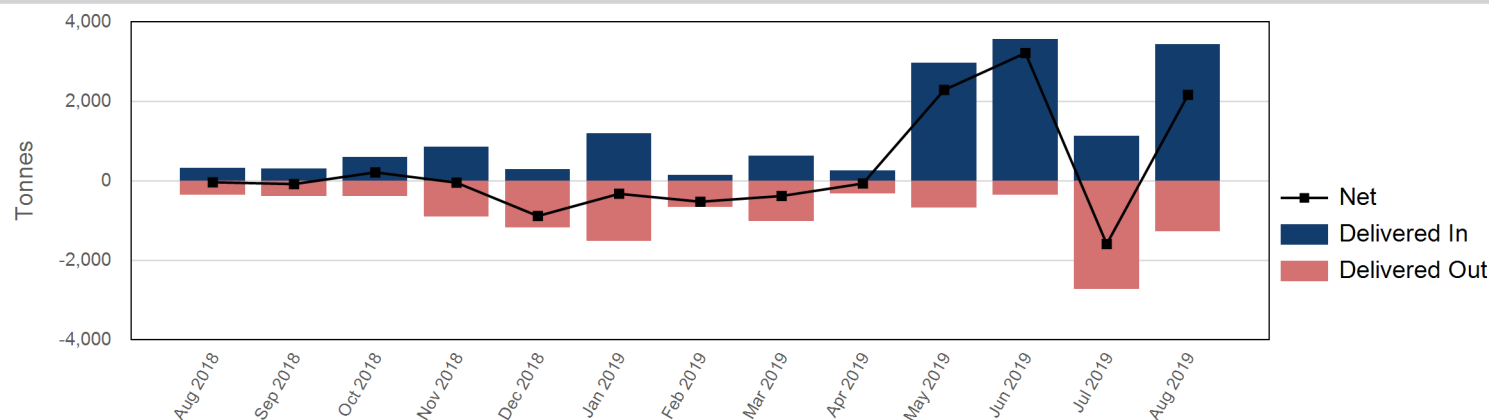
Delivered In	3,435
Delivered Out	-1,265
Net	2,170

LME warehouse stocks

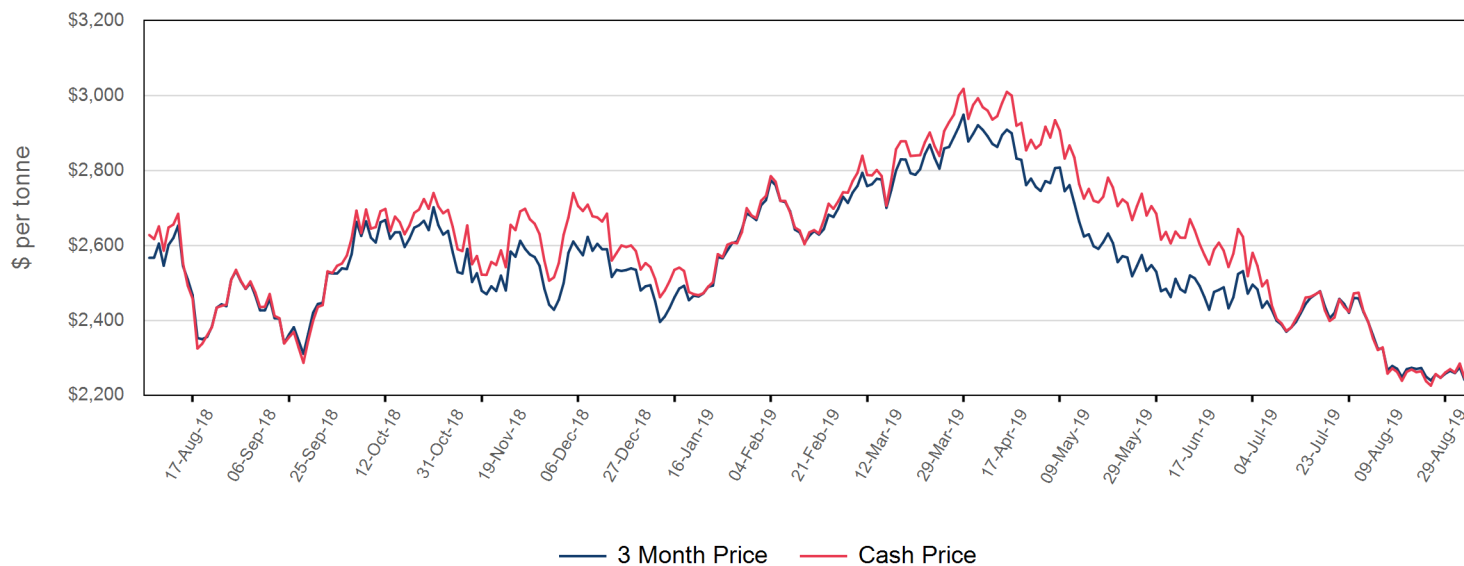


Warehouse stock - Year to date

Delivered In	13,350
Delivered Out	-8,520
Net	4,830



Official Price by prompt date



Official Cash Settlement Price

Average	\$2,275.14
Minimum	\$2,226.00
Maximum	\$2,396.00

Official 3 Month Price

Average	\$2,278.50
Minimum	\$2,240.00
Maximum	\$2,395.50

Volume (Excl UNA) - Aug 2019

Lots	2,037,262
------	-----------

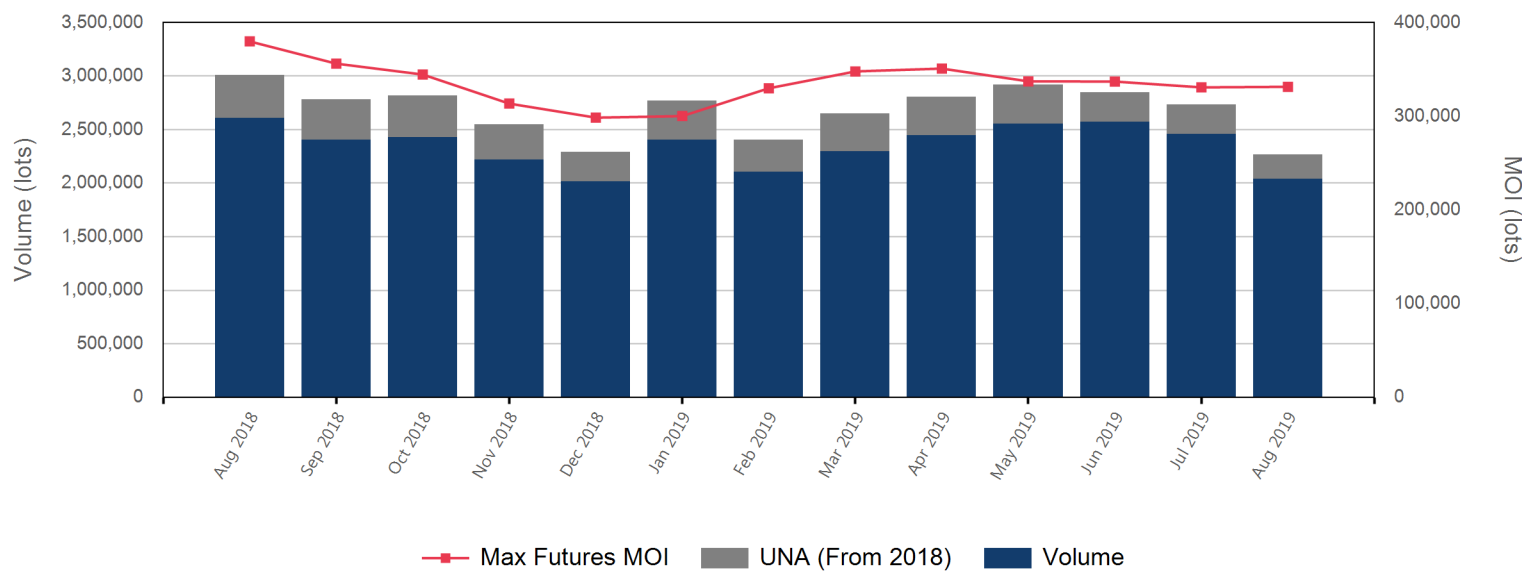
Volume - Aug 2019

Lots	2,266,193
Tonnes	56,654,825

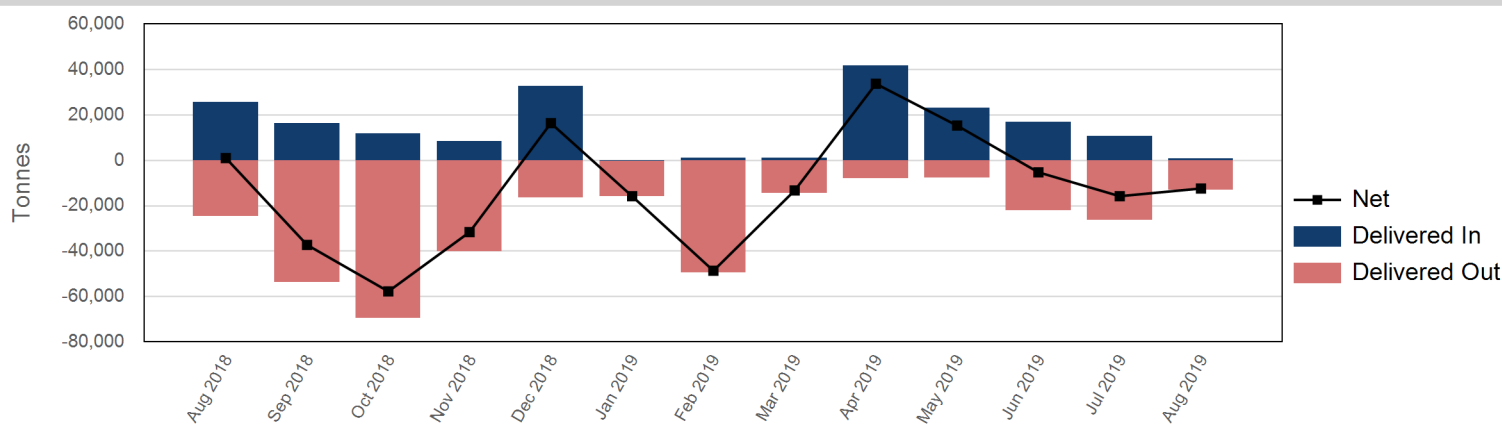
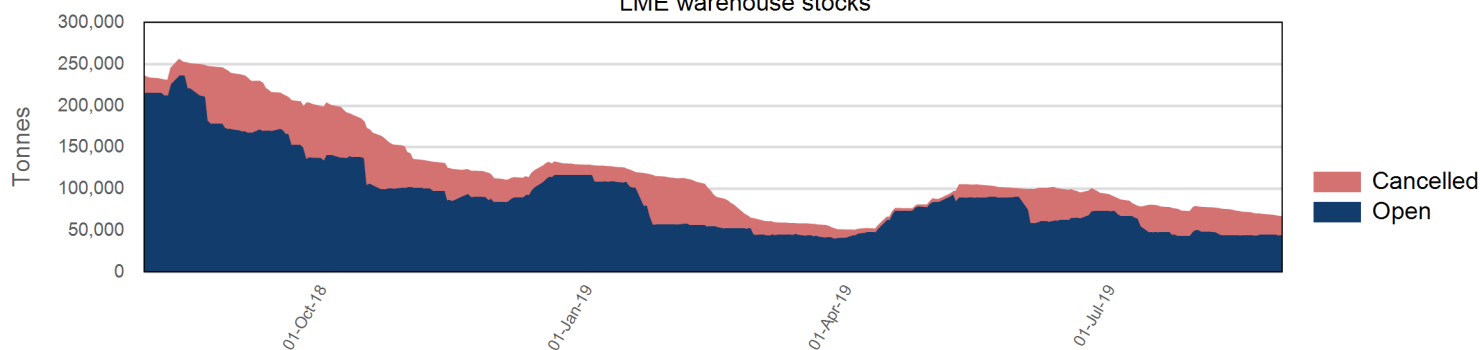
Volume - Year To date

Lots	21,389,108
Tonnes	534,727,700

Volume & Futures Market Open Interest (MOI)



LME warehouse stocks



Warehouse stock - Aug 2019

Delivered In	700
Delivered Out	-13,075
Net	-12,375

Warehouse stock - Year to date

Delivered In	95,000
Delivered Out	-157,025
Net	-62,025